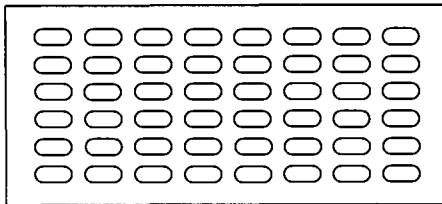
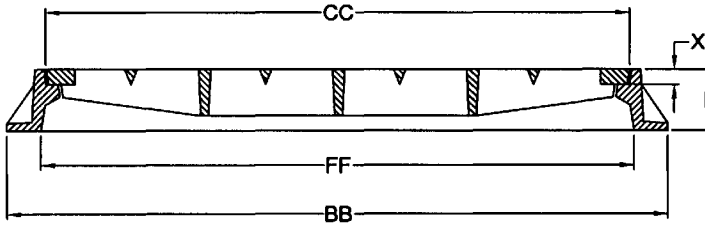
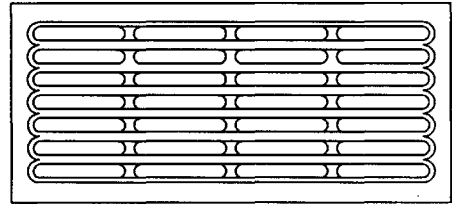


FRAME SHOWN WITH BICYCLE PROOF GATE



OVAL HOLE GRATE



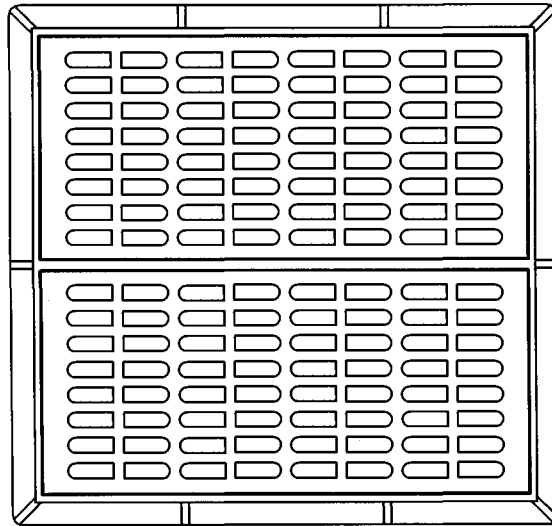
STREAM FLOW GRATE

ITEM NUMBER	DIMENSIONS IN INCHES							
	B	BB	C	CC	E	F	FF	X
23404	28	41-1/4	20-1/2	34-1/8	4	22	32-3/4	1-1/4
23405	28	54	21-3/4	47-3/4	5	22	48	1-1/4
23406	28	42	21-3/4	35-3/4	5	22	36	1-1/4
23408	36	55-1/2	30	49-1/4	5	30-1/4	49-1/2	1-1/4
23444	32	54	25-3/4	47-3/4	5	26	48	1-1/4
23449	34	56	25-3/4	47-3/4	9	26	48	1-1/4

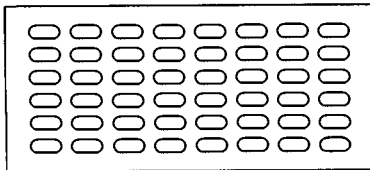
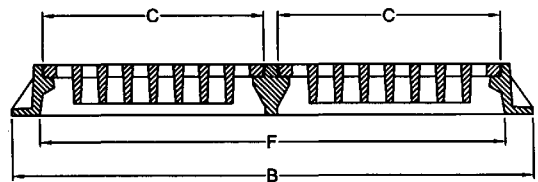
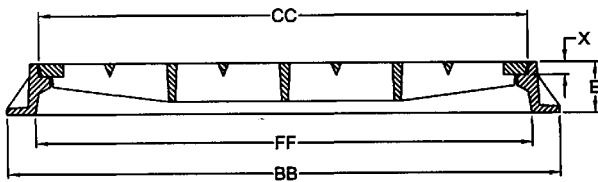
NOTE: SPECIFY GRATE STYLE. UNLESS SPECIFIED, BICYCLE SAFE GRATES WILL BE SHIPPED.

**HEAVY DUTY FLUSH INLET FRAMES & GRATES**

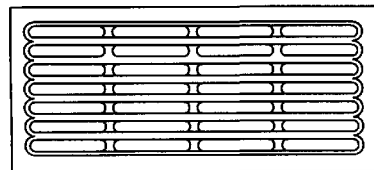
SUITABLE FOR A.A.S.H.T.O. H 20-44 AND HS 20-44 HIGHWAY LOADING.



FRAME SHOWN WITH BICYCLE PROOF GRATES



OVAL HOLE GRATE



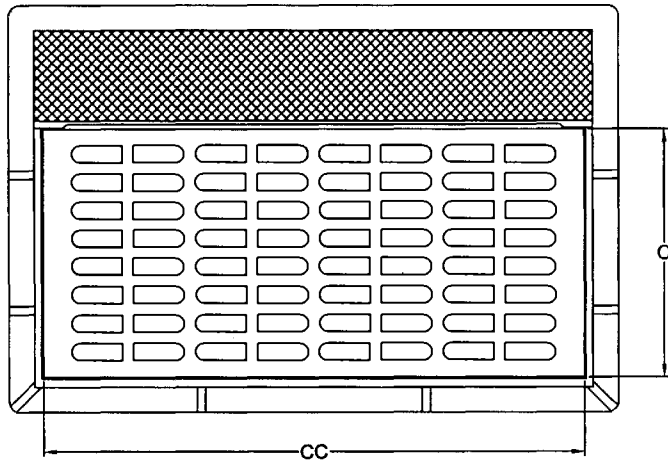
STREAM FLOW GRATE

ITEM NUMBER	DIMENSIONS IN INCHES							
	B	BB	C	CC	E	F	FF	X
23425	51	54	21-3/4	47-3/4	5	45	48	1-1/4

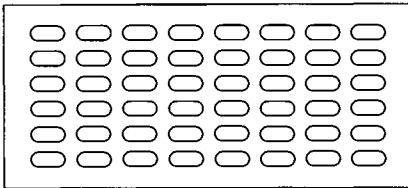
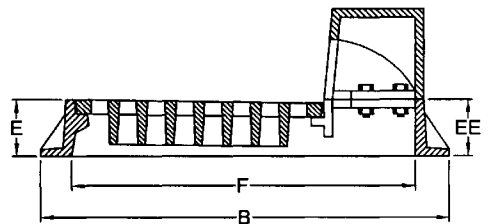
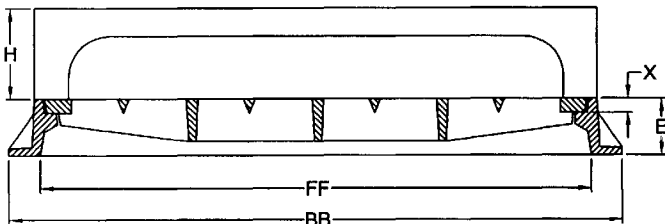
NOTE: SPECIFY GRATE STYLE. UNLESS SPECIFIED, BICYCLE SAFE GRATES WILL BE SHIPPED.

**HEAVY DUTY DOUBLE FLUSH INLET FRAMES & GRATES**

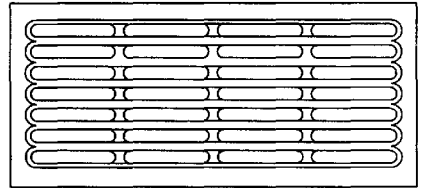
SUITABLE FOR A.A.S.H.T.O. H 20-44 AND HS 20-44 HIGHWAY LOADING.



FRAME SHOWN WITH BICYCLE PROOF GRATE



OVAL HOLE GRATE



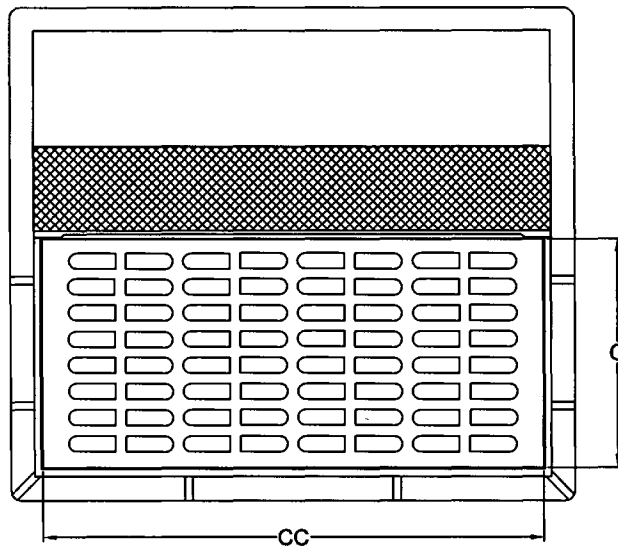
STREAM FLOW GRATE

ITEM NUMBER	DIMENSIONS IN INCHES								
	B	BB	C	CC	E	EE	F	FF	X
22633	36	42	21-3/4	35-3/4	5-1/2	4	30	36	1-1/4
22617	36	54	21-3/4	47-3/4	5-1/2	4	30	48	1-1/4
22596	37	54	25-3/4	47-3/4	5-1/2	5	31	48	1-1/4
22639	42	54	30	49-1/4	5-1/2	4-1/2	36	49	1-1/4

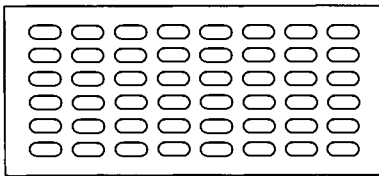
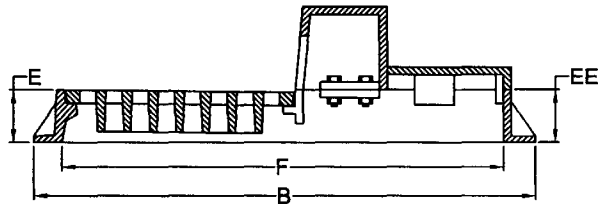
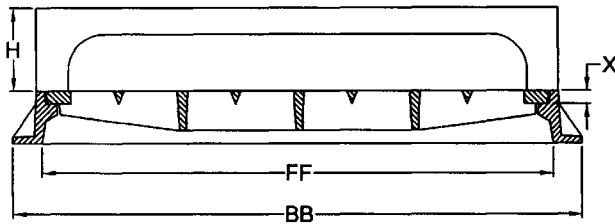
NOTE: 1.) SPECIFY GRATE STYLE. UNLESS SPECIFIED, BICYCLE SAFE GRATES WILL BE SHIPPED.  
 2.) SPECIFY CURB HEIGHT (DIMENSION H) 6" OR 8".

**HEAVY DUTY CURB INLET FRAMES & GRATES**

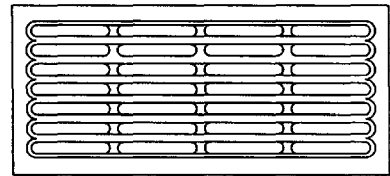
SUITABLE FOR A.A.S.H.T.O. H 20-44 AND HS 20-44 HIGHWAY LOADING.



FRAME SHOWN WITH BICYCLE GRATE



OVAL HOLE GRATE



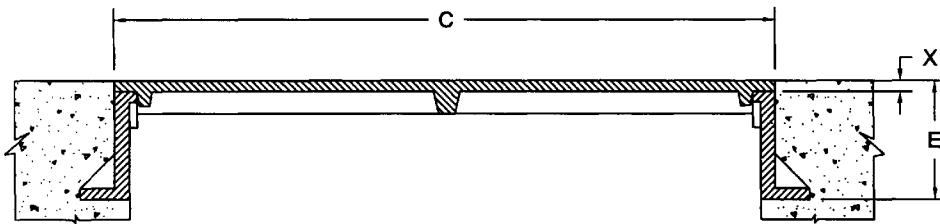
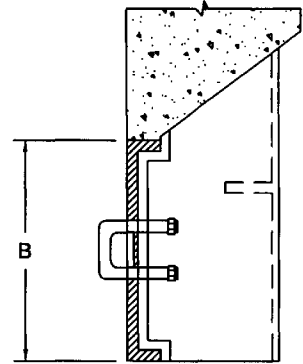
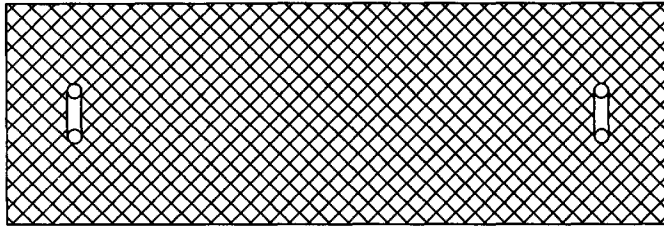
STREAM FLOW GRATE

ITEM NUMBER	DIMENSIONS IN INCHES								
	B	BB	C	CC	E	EE	F	FF	X
22618	48	54	21-3/4	47-3/4	5-1/2	5	42	48	1-1/4
22694	48	54	25-3/4	47-3/4	5-1/2	5	42	48	1-1/4

NOTE: 1.) SPECIFY GRATE STYLE. UNLESS SPECIFIED, BICYCLE SAFE GRATES WILL BE SHIPPED.  
 2.) SPECIFY CURB HEIGHT (DIMENSION H) 6" OR 8".

**H.D. CURB INLET FRAMES & GRATES WITH BACK PLATE**

SUITABLE FOR A.A.S.H.T.O. H 20-44 AND HS 20-44 HIGHWAY LOADING.



ITEM NUMBER	DIMENSIONS IN INCHES			
	B	C	E	X
24051	15	51	12-3/4	3/4
24063	15	63	12-3/4	3/4

**CATCH BASIN HOODS & LEGS**