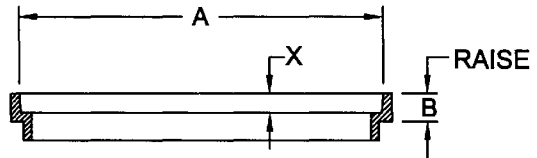
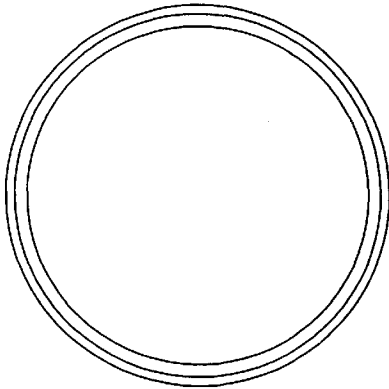


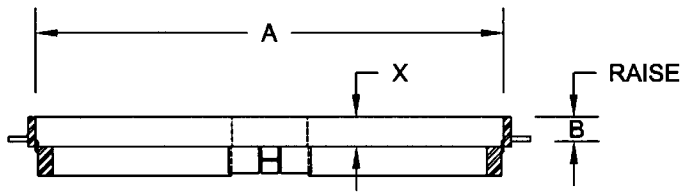
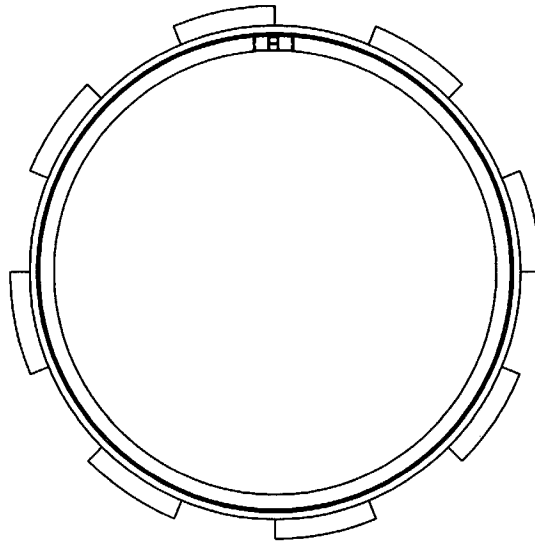
ITEM NUMBER	DIMENSIONS IN INCHES			SUITABLE FOR ITEM NUMBER
	A	B	X	
12415	24-1/4	1-1/2	1-3/8	} 12441, 12461, 12471, 12481, 12442, 12462, 12472, & 12482
12420	24-1/4	2	1-3/8	
12525	25-5/8	2-1/2	2	12583
12615	26	1-1/2	1-3/8	} 12661, 12681, 12662, 12682, 12683, & 12684
12620	26	2	1-3/8	
12616	26-1/4	1-1/2	1-1/8	} 12645, 12665, 12685, 12644, 12664, & 12684
12621	26-1/4	2	1-1/8	
12720	27	2	1-1/2	12741, 12781, & 12782
13220	31-7/8	2	1-3/4	} 13251, 13261, 13281, 13252 13262, & 13282

C.I. MANHOLE EXTENSION RINGS



ITEM NUMBER	DIMENSIONS IN INCHES			SUITABLE FOR ITEM NUMBER
	A	B	X	
12321	23-3/4	2	1-1/2	12373
12215	24	1-1/2	1-1/4	12361
12322	24	2	1-1/4	
12230	24	3	1-1/4	
12312	23-3/4	1-1/4	1	12341, 12371 & 12372
12315	23-3/4	1-1/2	1	
12317	23-3/4	1-3/4	1	
12320	23-3/4	2	1	
12325	23-3/4	2-1/2	1	
12330	23-3/4	3	1	
12340	23-3/4	4	1	
11615	16-1/4	1-1/2	7/8	11671

C.I. MANHOLE EXTENSION RINGS



ITEM NUMBER	DIMENSIONS IN INCHES			SUITABLE FOR
	A	B	X	
S2415	24 TO 24-1/2	1-1/2	1-3/8	{ 12441, 12461, 12471, 12481, 12442, 12462, 12472, & 12482

NOTE: ABOVE SIZE IS A STOCK ITEM. OTHER SIZES AVAILABLE UPON REQUEST.

ADJUSTABLE STEEL EXTENSION RINGS