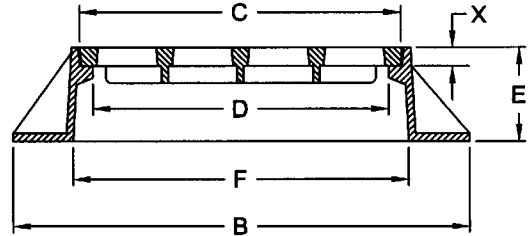
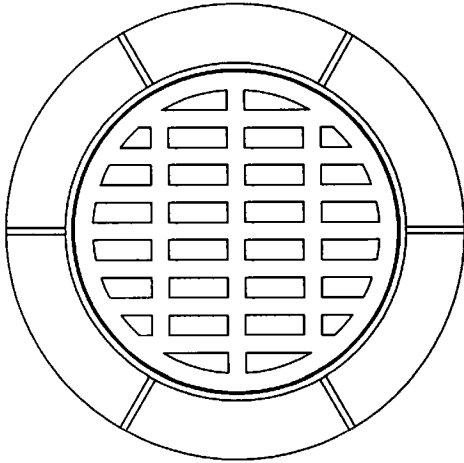


ITEM NUMBER	DIMENSIONS IN INCHES					
	B	C	D	E	F	X
11238	16-1/2	12	10-1/2	3	12-1/4	1
11838	22-1/2	18	16-1/2	3	18-1/4	1
12038	24-1/2	20	18-1/2	3	20-1/4	1
12438	28	23-3/4	22	3	24	1

LIGHT DUTY MANHOLE FRAMES & GRATES

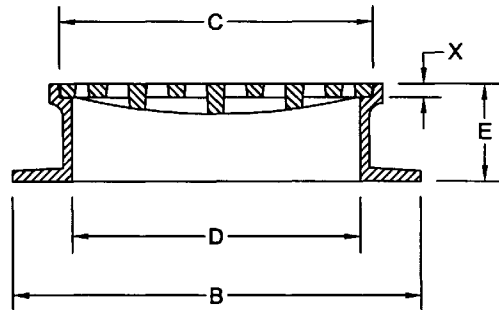
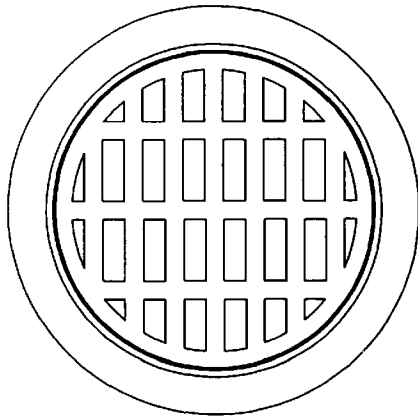
REVERSIBLE TYPE FRAMES



ITEM NUMBER	DIMENSIONS IN INCHES					
	B	C	D	E	F	X
12442	32	24	22-3/8	4	24-1/4	1-3/8
12462	34	24	22-3/8	6	24	1-3/8
12472	34	24	22-1/2	7	24-7/16	1-3/8
12482	34	24	22-3/8	8	24-5/8	1-3/8
12662	34	25-3/4	24	6	26-5/8	1-3/8
12682	34-1/2	25-3/4	24	8	27	1-3/8
13252	39	31-5/8	30	4	32-1/2	1-3/4
13262	39	31-5/8	30	6	32-1/2	1-3/4
13282	39	31-5/8	30	8	32-1/2	1-3/4

HEAVY DUTY MANHOLE FRAMES & GRATES

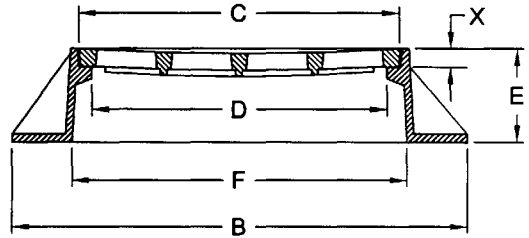
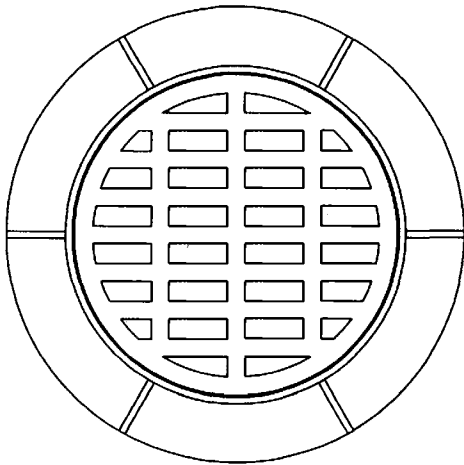
SUITABLE FOR A.A.S.H.T.O. H 20-44 AND HS 20-44 HIGHWAY LOADING.



ITEM NUMBER	DIMENSIONS IN INCHES				
	B	C	D	E	X
12644	34	26	24	4	1-1/8
12664	34	26	24	6	1-1/8
12694	34	26	24	8-1/8	1-1/8

HEAVY DUTY MANHOLE FRAMES & GRATES

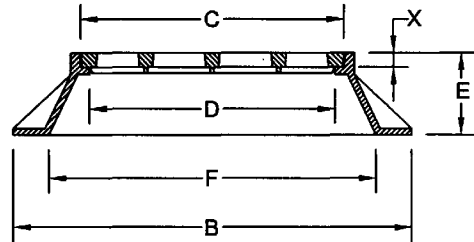
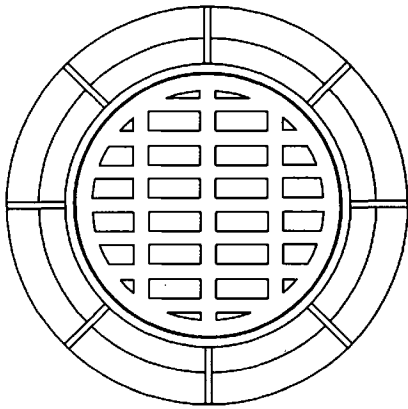
SUITABLE FOR A.A.S.H.T.O. H 20-44 AND HS 20-44 HIGHWAY LOADING.



ITEM NUMBER	DIMENSIONS IN INCHES					
	B	C	D	E	F	X
12667	34	25-3/4	24	6	26-5/8	1-3/8
12687	34-1/2	25-3/4	24	8	27	1-3/8

HEAVY DUTY MANHOLE FRAMES & CONCAVE GRATES

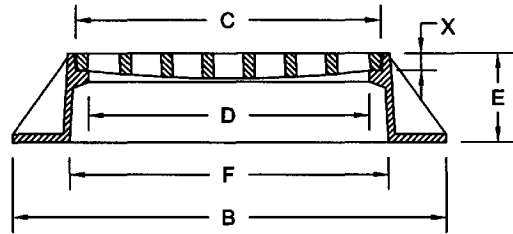
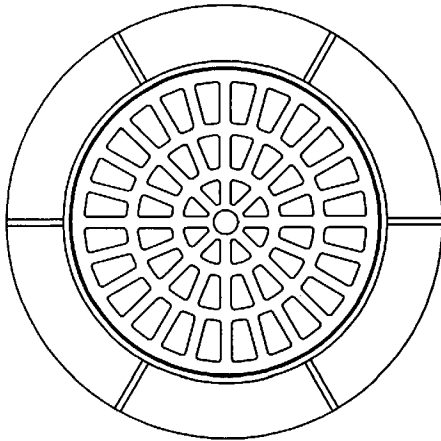
SUITABLE FOR A.A.S.H.T.O. H 20-44 AND HS 20-44 HIGHWAY LOADING.



ITEM NUMBER	DIMENSIONS IN INCHES					
	B	C	D	E	F	X
12684	39	25-3/4	24	8	32	1-3/8

HEAVY DUTY MANHOLE FRAME & GRATE

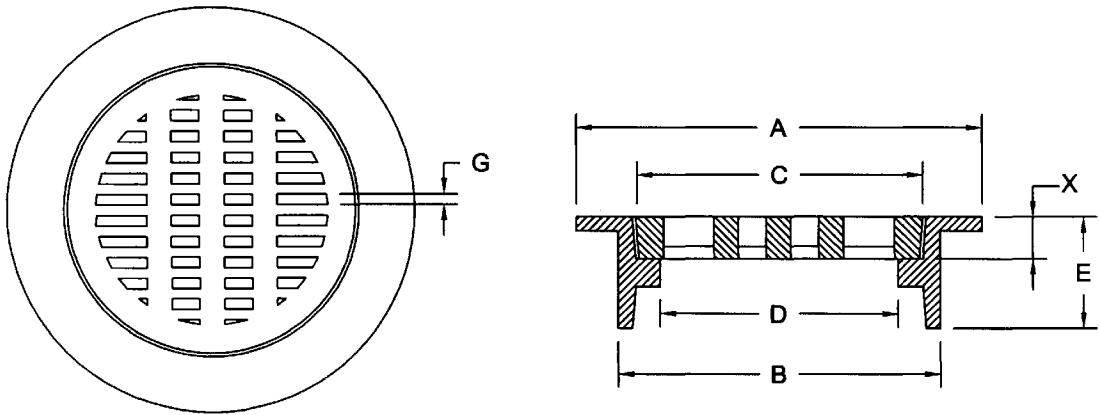
SUITABLE FOR A.A.S.H.T.O. H 20-44 AND HS 20-44 HIGHWAY LOADING.



ITEM NUMBER	DIMENSIONS IN INCHES					
	B	C	D	E	F	X
12043	27-9/16	22	20-1/2	4	22	1-1/2
12443	32	24	22-3/8	4	24-1/4	1-3/8
12463	34	24	22-3/8	6	24	1-3/8
12473	34	24	22-1/2	7	24-7/16	1-3/8
12483	34	24	22-3/8	8	24-5/8	1-3/8

HEAVY DUTY MH FRAMES & RADIAL GRATES

SUITABLE FOR A.A.S.H.T.O. H 20-44 AND HS 20-44 HIGHWAY LOADING.



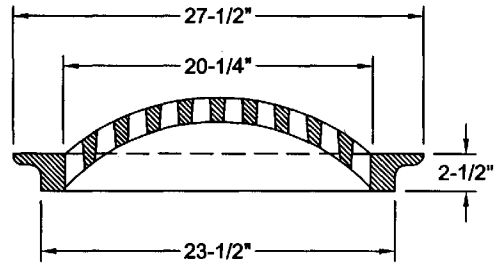
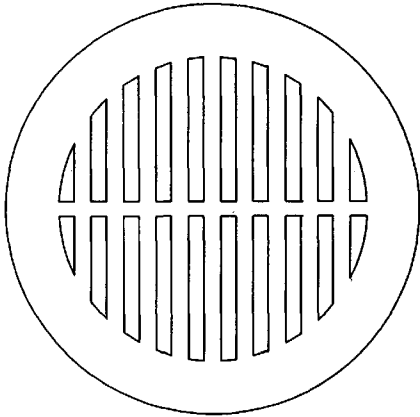
ITEM NUMBER	DIMENSIONS IN INCHES							PIPE SIZE
	A	B	C	D	E	G	X	
11248	14-1/2	11-1/2	10-1/4	8-1/2	4	3/8	1-1/2	12
11548	17-1/2	14-1/2	13-1/4	11-1/2	4	3/8	1-1/2	15
11848	20-1/2	17-1/2	16-1/4	14-1/2	4	31/64	1-1/2	18

H. D. FRAMES & GRATES FOR CORRUGATED PIPES

A.D.A. COMPLIANT GRATES WITH REVERSIBLE FRAMES

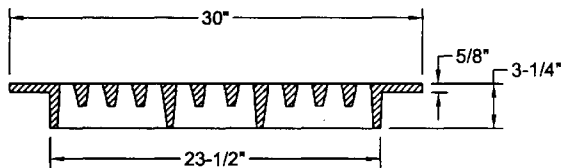
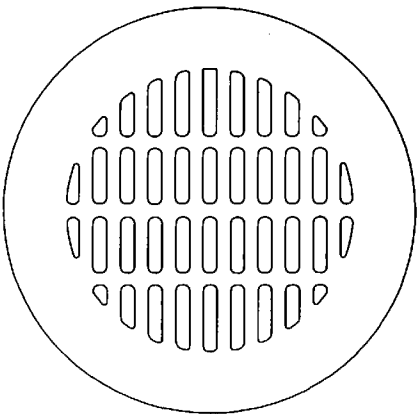
SUITABLE FOR A.A.S.H.T.O. H 20-44 AND HS 20-44 HIGHWAY LOADING.

**BEEHIVE GRATE
FOR CONCRETE OR CORRUGATED PIPE**



ITEM NUMBER 12707

**FLAT GRATE
FOR CONCRETE OR CORRUGATED PIPE**



ITEM NUMBER 13007