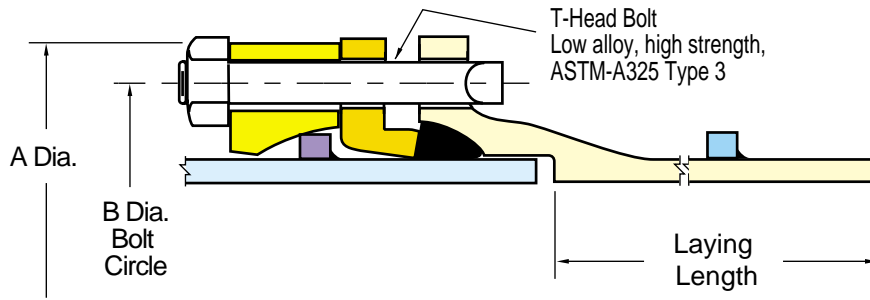


Griffin BOLT-LOK™ Flexible Restrained Bolted Joint

The **BOLT-LOK** joint provides a flexible restrained connection to bolted joints such as mechanical joint pipe and fittings or valves. The **BOLT-LOK** joint assembly consists of a ductile iron "**BOLT-LOK**" ring in combination with a factory-welded alloy steel ring on the plain end (spigot) of a pipe. **BOLT-LOK** connections can be ordered with any standard or custom pipe laying length and bell configuration that may be required. Additionally, it can be ordered as a **BOLT-LOK x BOLT-LOK** combination. **BOLT-LOK** joints are available in 4" through 48" pipe sizes and are supplied with the appropriate gland and fasteners. **Note: Although mechanical joint pipe is produced in 4" - 24" sizes only, BOLT-LOK joints can be specified on any spigot up to 48" diameter.**



4" - 24" BOLT-LOK™ Joint

Pipe Size (in.)	"A" Diameter	"B" Diameter	Bolt Length	Number of Bolts	Laying Length	Deflection Angle (degrees)
4	9.38	7.50	6	4	18'0"	4°
6	11.38	9.50	6	6	20'0"	4°
8	13.63	11.75	6	6	20'0"	4°
10	15.88	14.00	6	8	20'0"	4°
12	18.19	16.25	7	8	20'0"	4°
14	20.50	18.75	7	10	20'0"	3°
16	22.75	21.00	7	12	20'0"	3°
18	25.75	23.25	7	12	20'0"	2½°
20	28.25	25.50	8	14	20'0"	2½°
24	32.50	30.00	8	16	20'0"	2°

30" - 48" BOLT-LOK™ Joint

Pipe Size (in.)	"A" Diameter	"B" Diameter	Bolt Length	Number of Bolts	Laying Length	Deflection Angle (degrees)
30	39.56	36.88	9	20	20'0"	2°
36	46.62	43.75	10	24	20'0"	2°
42	53.95	50.62	11	28	20'0"	½°
48	60.86	57.50	12	32	20'0"	½°

Pollardwater.com
 THE PROFESSIONAL'S CHOICE
www.pollardwater.com
 TOLL FREE 800-437-1146