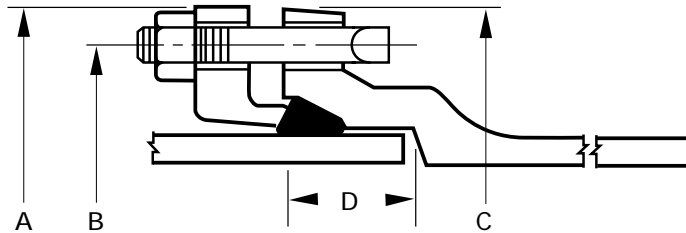


Mechanical Joint Ductile Iron Pipe

The mechanical joint is a bolted joint utilizing a ductile iron gland and mechanical joint gasket. The mechanical joint is recommended for water service using ductile iron pipe particularly where many connections are required. All components of the mechanical joint are interchangeable. The plain end of mechanical joint pipe has the same outside diameter as push-on joint pipe. As a result, it can be fitted into such joints in the field by beveling the plain end. All of the accessories (glands and fasteners) are supplied with each joint.



Nominal Pipe Size (inches)	"A" Gland O.D.	"B" Bolt Circle	"C" Flange O.D.	"D" Socket Depth	Bolt Size and Length (inches)	No. Bolts	Nut Size (inches)	Torque Range	Maximum Joint Deflection Angle (deg-min)	Maximum Deflection per Joint (inches)	
										18 ft. Laying Length	20 ft. Laying Length
3	7.69	6.19	7.62	2.50	5/8 x 3	4	1 ¹ / ₁₆	45-60 ft-lbs	8° - 18'	31	
4	9.12	7.50	9.06	2.50	3/4 x 3-1/2	4	1 ¹ / ₄	75-90 ft-lbs	8° - 18'	31	
6	11.12	9.50	11.06	2.50	3/4 x 3-1/2	6	1 ¹ / ₄	75-90 ft-lbs	7° - 07'	27	30
8	13.37	11.75	13.31	2.50	3/4 x 4	6	1 ¹ / ₄	75-90 ft-lbs	5° - 21'	20	22
10	15.62	14.00	15.62	2.50	3/4 x 4	8	1 ¹ / ₄	75-90 ft-lbs	5° - 21'	20	22
12	17.88	16.25	17.88	2.50	3/4 x 4	8	1 ¹ / ₄	75-90 ft-lbs	5° - 21'	20	22
14	20.25	18.75	20.25	3.50	3/4 x 4-1/2	10	1 ¹ / ₄	75-90 ft-lbs	3° - 35'	13.5	15
16	22.50	21.00	22.50	3.50	3/4 x 4-1/2	12	1 ¹ / ₄	75-90 ft-lbs	3° - 35'	13.5	15
18	24.75	23.25	24.75	3.50	3/4 x 4-1/2	12	1 ¹ / ₄	45-60 ft-lbs	3° - 00'		12
20	27.00	25.50	27.00	3.50	3/4 x 4-1/2	14	1 ¹ / ₄	75-90 ft-lbs	3° - 00'		12
24	31.50	30.00	31.50	3.50	3/4 x 5	16	1 ¹ / ₄	75-90 ft-lbs	2° - 23'		10

Pollardwater.com
 THE PROFESSIONAL'S CHOICE
www.pollardwater.com
 TOLL FREE 800-437-1146