



## SERVICE SADDLES



***Pollardwater.com***  
THE PROFESSIONAL'S CHOICE  
**www.pollardwater.com**  
**TOLL FREE 800-437-1146**

A.Y. McDONALD MFG. CO.  
WATER SERVICE PRODUCTS

## Service Saddles • General Information

### Table of Contents

	Page		Page
Service Saddle Replacement Parts.....	2	<b>For C900 PVC pipe:</b>	
O.D. Chart.....	3	3805 & 3806.....	8
<b>For IPS PVC pipe:</b>		3895 & 3896.....	9
3801 & 3802.....	4	3835 & 3836.....	10
3891 & 3892.....	5	3855 & 3856.....	11
<b>Ductile Iron Body Saddles:</b>		3845 & 3846.....	12
4815A & 4816A.....	6	<b>For Ductile Iron pipe:</b>	
4825A & 4826A.....	6	3815 & 3816.....	13
4835A & 4836A.....	7	3825 & 3826.....	14
4845A & 4846A.....	7	3825A & 3825B.....	15
4855A & 4856A.....	7	3826A & 3826B.....	15
		<b>Accessories:</b>	
		Bushings.....	16

### Service Saddle Replacement Parts

MODEL	PIPE SIZE	TAP SIZE	SADDLE STYLE	NO. OF BOLTS / NUTS	SCREWS / BOLT / NUT	ORDER PART NO.
3801 3802 3805 3806	2" - 8"	1/2" - 1"	Two piece brass	2 per saddle	5/16 - 18 x 2" long Bronze bolt	3100-906
3801 3802 3805 3806	4" 6" 8"	1 1/2" - 2"	Two piece brass	2 per saddle	7/16 - 14 x 2" long Bronze bolt	3100-908
3801 3802 3805 3806	10" - 12"	1/2" - 2"	Two piece brass	2 per saddle	1/2 x 3" long Bronze bolt	3100-915
3815 3816 3825 3825A 3825B 3826 3826A 3826B	4" - 16"	3/4" - 2"	Bronze strap style	2 per single 4 per double	5/8 - 11 Brass nut	4148-537
3835 3836 3845 3846 3855 3856 4816A 4815A 4825A 4826A 4835A 4836A 4845A 4846A 4855A 4856A	4" - 12"	3/4" - 2"	Stainless strap style	2 per single 4 per double	5/8 - 11 Stainless nut & washer	4148-660 Nut 4148-573 Washer
3891 3892 3895 3896	2" - 8"	3/4" - 2"	Hinge style	1 per 1/2, 3/4 & 1 taps 2 per 1 1/2 & 2 taps	5/16 - 18 x 1 1/2" long Bronze bolt	3100-911

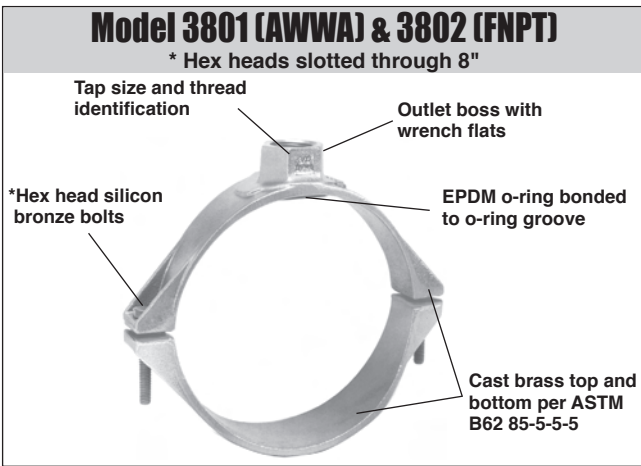
**Service Saddles • O.D. Chart**

<b>O.D. Chart</b>										
PIPE SIZE	PVC (STEEL SIZE)	PVC C900	CAST IRON			ASBESTOS-CEMENT			STEEL	
	O.D.	O.D.	CLASSES		O.D.	CLASS	MACHINED END O.D.	ROUGH BARREL O.D. MIN - MAX	TYPE	O.D.
			PIT	SPUN						
1/2"	.84								STD.	.84
3/4"	1.05								STD.	1.05
1"	1.32								STD.	1.32
1 1/4"	1.66								STD.	1.66
1 1/2"	1.90								STD.	1.90
2"	2.38	2.50			2.50				STD.	2.38
2 1/2"	2.88								STD.	2.88
3"	3.50		A B,C,D		3.80	100	3.74	4.00	O.D.	3.00
				50 - 350	3.96	150	3.84	4.10	STD.	3.50
						200	3.84	4.29		
3 1/2"								STD.	4.00	
4"	4.50	4.80	A B,C,D	50 - 350	4.80	100	4.64	4.79 - 5.14	O.D.	3.00
					5.00	150	4.81	4.97 - 5.27	STD.	3.50
						200	4.81	5.22 - 5.57		
4 1/2"								STD.	5.00	
5"								STD.	5.56	
6"	6.63	6.90	A B,C,D E,F	50 - 350	6.90	100	6.91	7.05 - 7.40	O.D.	6.00
					7.10	150	6.91	7.07 - 7.37	STD.	6.63
					7.22	200	6.91	7.26 - 7.56		
7"								STD.	7.63	
8"	8.63	9.05	A,B C,D E,F	50 - 300	9.05	100	9.11	9.22 - 9.57	O.D.	8.00
				350	9.30	150	9.11	9.27 - 9.57	STD.	8.63
					9.42	200	9.11	9.39 - 9.74		
9"								STD.	9.63	
10"	10.75	11.10	A,B C,D E,F	50 - 200	11.10	100	11.24	11.42 - 11.77	O.D.	10.00
				250 - 350	11.40	150	11.66	11.82 - 12.12	STD.	10.75
					11.60	200	11.66	11.77 - 12.12		
12"	12.75	13.20	A,B C,D E,F	50 - 200	13.20	100	13.44	13.69 - 14.04	O.D.	12.00
				250 - 350	13.50	150	13.92	14.08 - 14.38	STD.	12.75
					13.76	200	13.92	14.03 - 14.38		
14"			A,B C,D E,F	50 - 100	15.30	100	15.07	15.40 - 15.80	O.D.	14.00
				150 - 300	15.65	150	16.22	16.38 - 16.73		
					15.98	200	16.22	16.48 - 16.88		
16"			A,B C,D E,F	50 - 100	17.40	100	17.14	17.54 - 17.94	O.D.	16.00
				150 - 300	17.80	150	18.46	18.62 - 18.97		
					18.16	200	18.46	18.79 - 19.19		
18"			A,B C,D	50 - 100	19.50	100	19.90	20.44	STD.	18.00
				150 - 250	19.92	150	20.94	21.20		
20"			A,B C,D	50 - 100	21.60	100	22.12	22.50	STD.	20.00
				150 - 250	22.06	150	23.28	23.54		
22"								STD.	22.00	
24"			A,B C,D	50 - 100	25.80	100	26.48	27.17	STD.	24.00
				150 - 250	26.32	150	27.96	28.22		

FOR IPS PVC Pipe

## All Brass Service Saddles • General Information

A.Y. McDonald Mfg. Co. Model 3801, 3802 Brass Service Saddles are designed for use on PVC pipe, and provide full circle support without cracking or distorting the pipe. The pressure capabilities equal, but do not exceed the working pressure rating of the PVC pipe up to 200 PSIG. Installation instructions are provided with each saddle. Please read and follow instructions to ensure long lasting performance.



MODEL 3801 (AWWA) MODEL 3802 (FNPT)			
Nominal Size	Pipe O.D.		Tap Size
2"	2.38"	X	1/2", 3/4" or 1"
2 1/2"	2.88"	X	1/2", 3/4" or 1"
3"	3.50"	X	1/2", 3/4" or 1"
4"	4.50"	X	1/2", 3/4", 1", 1 1/2" or 2"
6"	6.63"	X	1/2", 3/4", 1", 1 1/2" or 2"
8"	8.63"	X	1/2", 3/4", 1", 1 1/2" or 2"
10"	10.75"	X	1/2", 3/4", 1", 1 1/2" or 2"
12"	12.75"	X	1/2", 3/4", 1", 1 1/2" or 2"

- Order Saddles by Model Number, Nominal Pipe Size and Tap Size (Example: 3801 6" x 3/4").
- Contact factory for availability of 1/2" AWWA and 1/2" NPT tap sizes.
- Contact factory for 1 1/4" tapped saddles.
- Contact factory for BSPP tapped saddles.

### Materials

- **Top and Bottom**  
85-5-5-5 cast brass per ASTM B62
- **Silicon Bronze Bolts**
  - 1/2" Slotted Hex Head (3100-906)  
5/16" - 18 UNC - 2A x 2" long  
fits on 2", 2 1/2", 3", 4", 6" & 8" diameter saddles with 3/4" and 1" Taps
  - 5/8" Slotted Hex Head (3100-908)  
7/16" - 14 UNC - 2A x 2" long  
fits on 4", 6" & 8" diameter saddles with 1 1/2" and 2" Taps
  - 3/4" Hex Head (3100-915)  
1/2" - 13 UNC - 2A x 3" long  
fits on 10" & 12" diameter saddles with 1/2" - 2" Taps
- **Outlet Style Color Code**  
AWWA threads - Green  
FNPT pipe threads - Yellow

### Sizes

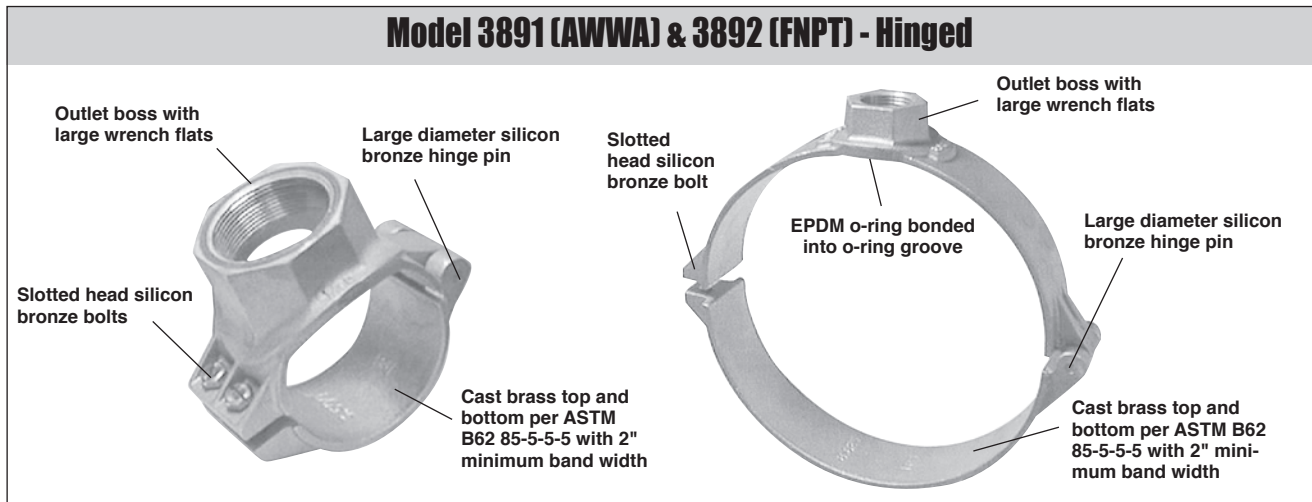
**IPS Models 3801 (AWWA) and 3802 (FNPT):**  
**Main Sizes:** 2", 2 1/2", 3", 4", 6", 8", 10" and 12"  
**Tap Sizes:** 1/2", 3/4" and 1" AWWA or FNPT on 2", 2 1/2" and 3" Saddles  
 1/2", 3/4", 1", 1 1/2", and 2" AWWA or FNPT on 4", 6", 8", 10" and 12" Saddles

### Notes

- All Saddles have cast IPS or Pipe O.D. range identification.
- All A.Y. McDonald Service Saddles meet A.W.W.A. standards.
- Use on cold water services only.

**All Brass Hinged Saddles • General Information**

A.Y. McDonald Mfg. Co. 3891 and 3892 Hinged Service Saddles are designed to give a positive water-tight seal with full support to the PVC pipe, without cracking or distorting the pipe. The pressure capabilities equal, but do not exceed the working pressure rating of the PVC pipe up to 200 PSIG. Installation instructions are provided with each saddle. Please read and follow instructions to ensure long lasting performance.



<b>MODEL 3891 (AWWA) MODEL 3892 (FNPT)</b>			
Nominal Size	Pipe O.D.		Tap Size
2"	2.38"	X	1/2", 3/4" or 1"
2 1/2"	2.88"	X	1/2", 3/4" or 1"
3"	3.50"	X	1/2", 3/4", 1" or 1 1/2"
4"	4.50"	X	1/2", 3/4", 1", 1 1/2" or 2"
6"	6.63"	X	1/2", 3/4", 1", 1 1/2" or 2"
8"	8.63"	X	1/2", 3/4", 1", 1 1/2" or 2"

- Order Saddles by Model Number, Nominal Pipe Size and Tap Size (**Example: 3891 6" x 3/4"**).
- Contact factory for availability of 1/2" AWWA and 1/2" FNPT tap sizes.
- Contact factory for 1 1/4" tapped saddles.
- Contact factory for availability of BSPP tapped saddles.

**Materials**

- **Top and Bottom**  
85-5-5-5 cast brass per ASTM B62
- **Silicon Bronze Bolt**
  - 1/2" Slotted Hex Head  
5/16" - 18 UNC - 2A x 1 1/2" long  
One bolt for all 3/4" and 1" taps  
Two bolts for all 1 1/2" and 2" taps
- **Silicon Bronze Hinge Pin**
  - .25 diameter - Standard for all sizes
- **Outlet Style Color Code**  
AWWA threads - Green  
FNPT pipe threads - Yellow

**Sizes**

**IPS Models 3891 (AWWA) and 3892 (FNPT):**

- Main Sizes:** 2", 2 1/2", 3", 4", 6", 8"
- Tap Sizes:** 1/2", 3/4" and 1" AWWA or FNPT on 2" and 2 1/2" Saddles.  
1/2", 3/4", 1" and 1 1/2" AWWA and 1/2", 3/4", 1", 1 1/2" and 2" FNPT on 3" Saddles.  
1/2", 3/4", 1", 1 1/2" and 2" AWWA or FNPT on 4", 6" and 8" Saddles.

**Notes**

- Outlets style color coded (See "Materials" above).
- All Saddles have cast IPS Pipe O.D. range identification.
- All A.Y. McDonald Service Saddles meet A.W.W.A. standards.
- Use on cold water services only.

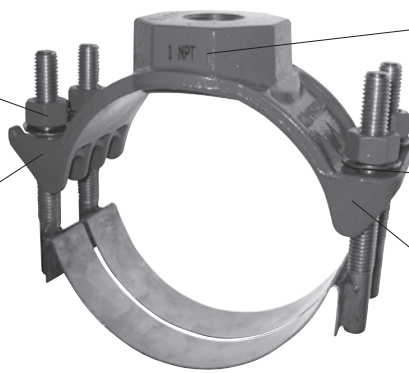
## Ductile Iron Body Saddles

A.Y. McDonald Ductile Iron Body Service Saddles have a wide range of specified models and are designed for use with cast or ductile iron, PVC and asbestos cement pipe. These saddles offer a trouble-free and efficient way of tapping a water main. They are recommended for use on underground water mains, while optional wide stainless steel bands are recommended for use on PVC. A.Y. McDonald Mfg. Co. recommends and supports the standard tapping practices and recommended material requirements for tapping PVC pipe outlined in the Uni-Bell Handbook of PVC Pipe and the AWWA Manual M23.

- Single Strap (Zinc plated steel or Stainless Steel) are designed for use with all taps.
- Double Strap (Zinc plated steel or Stainless Steel) are designed for use with all taps.
- Single Wide Strap (Stainless Steel) are designed for use with all taps.

Heavy hex nuts are 304 stainless steel with a blue Xylan® coating for ease of assembly.

The high strength Ductile Iron body of each saddle is made per ASTM A536 and is coated with a fusion applied epoxy coating.



Identification for size and type visible and permanent.

Heavy 304 stainless steel washers.

One side of the saddle has closed lugs to allow for pre-assembly, the other side has tapered open lugs with nubs to assist and make installation easier.

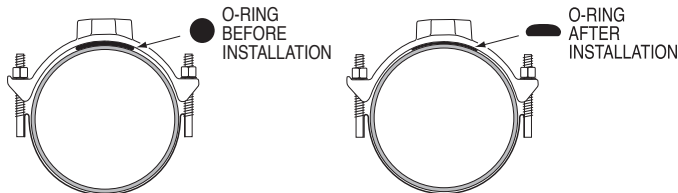
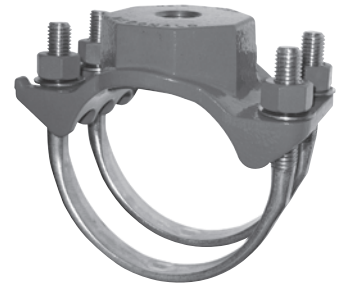
### MODEL 4815A & 4825A (AWWA) 4816A & 4826A (FNPT) Single Strap

Nominal Size	Pipe O.D.	Tap Size
4"	4.50" - 5.80"	X 1/2", 3/4", 1", 1 1/4", 1 1/2" or 2"
6"	6.63" - 6.90"	X 1/2", 3/4", 1", 1 1/4", 1 1/2" or 2"
8"	8.63" - 9.05"	X 1/2", 3/4", 1", 1 1/4", 1 1/2" or 2"
10"	10.75" - 11.10"	X 1/2", 3/4", 1", 1 1/4", 1 1/2" or 2"
12"	12.75" - 13.20"	X 1/2", 3/4", 1", 1 1/4", 1 1/2" or 2"

**4815A AWWA Tap  
4816A FNPT Tap**  
Single 5/8" steel (Zinc plated with a dichromate seal) with 7/8" flat bearing surface.



**4825A AWWA Tap  
4826A FNPT Tap**  
Double 5/8" steel (Zinc plated with a dichromate seal) with 7/8" flat bearing surface.



These saddles include a heavy duty EPDM o-ring gasket that is adhered to the saddle to insure a positive seal equal to, but not exceeding the pressure rating of the pipe, up to 200 PSIG.

**All Saddles fit the following O.D. Pipe Ranges:**

- 4" (4.50 - 4.80)
- 6" (6.63 - 6.90)
- 8" (8.63 - 9.05)
- 10" (10.75 - 11.10)
- 12" (12.75 - 13.20)

**■ Ductile Iron Body Saddles**

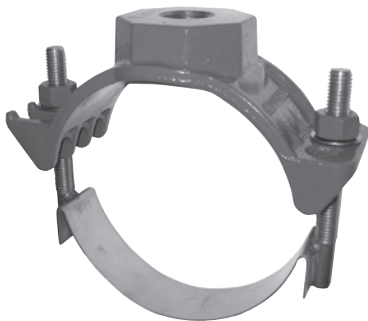
**A.Y. McDonald Ductile Iron Body Service Saddles** have a wide range of specified models and are designed for use with cast or ductile iron, PVC and asbestos cement pipe. These saddles offer a trouble-free and efficient way of tapping a water main. They are recommended for use on underground water mains, while optional wide stainless steel bands are recommended for use on PVC. A.Y. McDonald Mfg. Co. recommends and supports the standard tapping practices and recommended material requirements for tapping PVC pipe outlined in the Uni-Bell Handbook of PVC Pipe and the AWWA Manual M23.

- Single Strap (Zinc plated steel or Stainless Steel) are designed for use with all taps.
- Double Strap (Zinc plated steel or Stainless Steel) are designed for use with all taps.
- Single Wide Strap (Stainless Steel) are designed for use with all taps.

<b>MODEL</b>			
<b>4835A, 4845A &amp; 4855A (AWWA)</b>			
<b>4836A, 4846A &amp; 4856A (FNPT)</b>			
Nominal Size	Pipe O.D.		Tap Size
4"	4.50" - 4.80"	X	1/2", 3/4", 1", 1 1/4", 1 1/2" or 2"
6"	6.63" - 6.90"	X	1/2", 3/4", 1", 1 1/4", 1 1/2" or 2"
8"	8.63" - 9.05"	X	1/2", 3/4", 1", 1 1/4", 1 1/2" or 2"
10"	10.75" - 11.10"	X	1/2", 3/4", 1", 1 1/4", 1 1/2" or 2"
12"	12.75" - 13.20"	X	1/2", 3/4", 1", 1 1/4", 1 1/2" or 2"

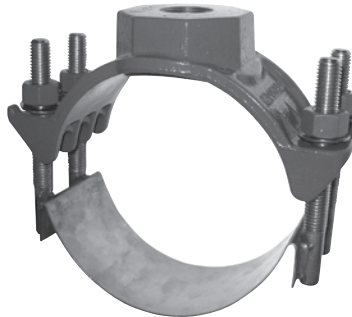
**4835A AWWA Tap  
4836A FNPT Tap**

Single stainless steel band and studs utilize 5/8" UNC threaded bolts of 304L stainless steel.



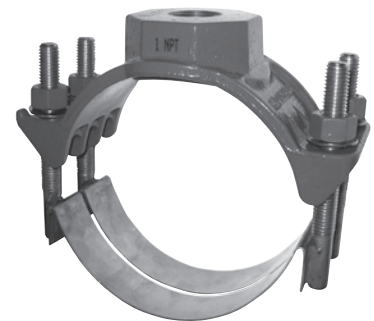
**4845A AWWA Tap  
4846A FNPT Tap**

Single 3 1/4" wide four bolt stainless steel band and studs utilize 5/8" UNC threaded bolts of 304L stainless steel.



**4855A AWWA Tap  
4856A FNPT Tap**

Double stainless steel band and studs utilize 5/8" UNC threaded bolts of 304L stainless steel.



O-RING BEFORE INSTALLATION

O-RING AFTER INSTALLATION

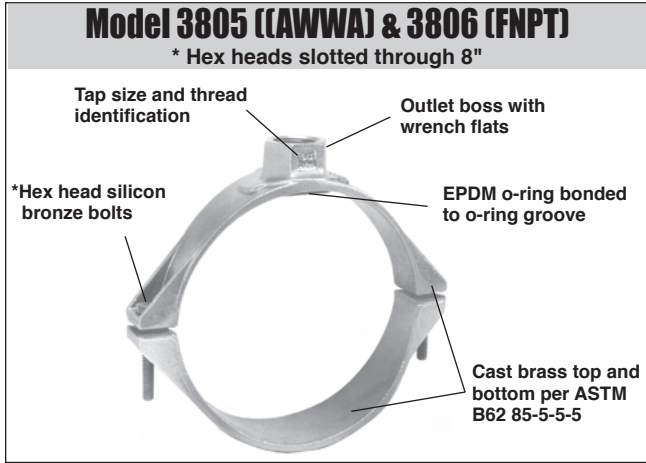
These saddles include a heavy duty EPDM o-ring gasket that is adhered to the saddle to insure a positive seal equal to, but not exceeding the pressure rating of the pipe, up to 200 PSIG.

**All Saddles fit the following O.D. Pipe Ranges:**

- 4" (4.50 - 4.80)
- 6" (6.63 - 6.90)
- 8" (8.63 - 9.05)
- 10" (10.75 - 11.10)
- 12" (12.75 - 13.20)

## ■ For cast iron O.D. PVC Pipe (AWWA C-900) - All Brass Saddle

A.Y. McDonald Mfg. Co. 3805 and 3806 Service Saddles are designed to give a positive water-tight seal with full support to the PVC pipe, without cracking or distorting the pipe. **Order the correct saddles for your use from the charts below. Not for use with ductile iron, asbestos-cement, cast iron pipe or copper tube.** Installation instructions are provided with each saddle. Please read and follow instructions to ensure long lasting performance.



MODEL 3805 (AWWA) MODEL 3806 (FNPT)			
Nominal Size	Pipe O.D.		Tap Size
4"	4.80"	X	1/2", 3/4", 1", 1 1/2" or 2"
6"	6.90"	X	1/2", 3/4", 1", 1 1/2" or 2"
8"	9.05"	X	1/2", 3/4", 1", 1 1/2" or 2"
10"	11.10"	X	1/2", 3/4", 1", 1 1/2" or 2"
12"	13.20"	X	1/2", 3/4", 1", 1 1/2" or 2"

- Order Saddles by Model Number, Nominal Pipe Size and Tap Size (**Example: 3805 10" x 1"**).
- Contact factory for availability of 1/2" AWWA and 1/2" NPT tap sizes.
- Contact factory for 1 1/4" tapped saddles.
- Contact factory for BSPP tapped saddles.

## ■ Materials

- **Top and Bottom**  
85-5-5-5 cast brass per ASTM B62
- **Silicon Bronze Bolts**
  - 1/2" Slotted Hex Head (3100-906)  
5/16" - 18 UNC - 2A x 2" long  
fits on 2", 2 1/2", 3", 4", 6" & 8" diameter saddles with 3/4" and 1" Taps
  - 5/8" Slotted Hex Head (3100-908)  
7/16" - 14 UNC - 2A x 2" long  
fits on 4", 6" & 8" diameter saddles with 1 1/2" and 2" Taps
  - 3/4" Hex Head (3100-915)  
1/2" - 13 UNC - 2A x 3" long  
fits on 10" & 12" diameter saddles with 1/2" - 2" Taps
- **Outlet Style Color Code**  
AWWA threads - Green  
FNPT pipe threads - Yellow

## ■ Sizes

### C-900 Models 3805 (AWWA) and 3806 (FNPT):

**Main Sizes:** 4", 6", 8", 10" and 12"

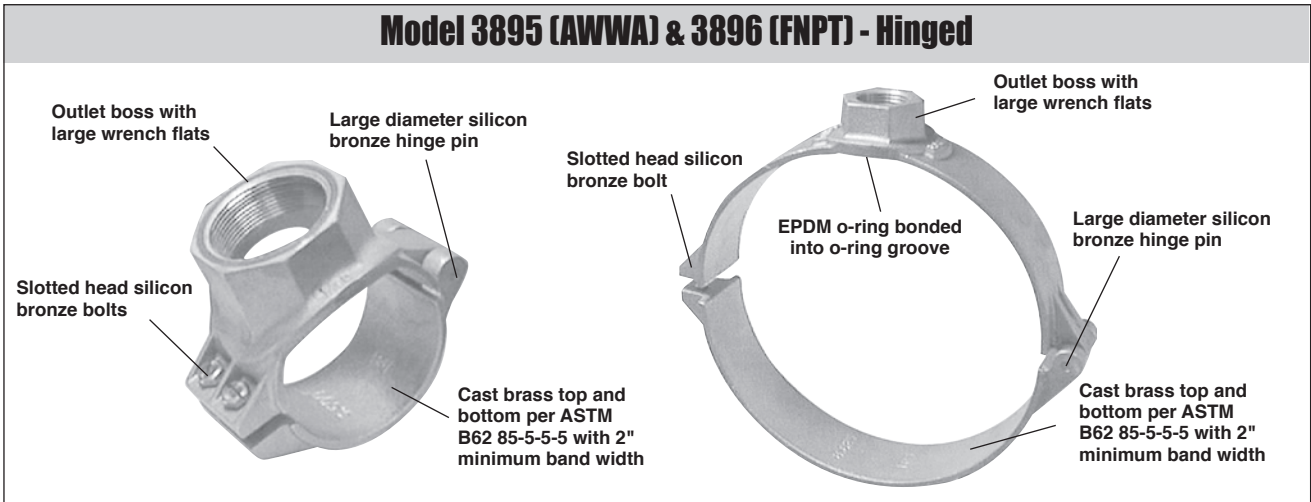
**Tap Sizes:** 1/2", 3/4", 1", 1 1/2", and 2" AWWA or FNPT  
Contact factory for other tap sizes.

## ■ Notes

- All Saddles have cast C900 or Pipe O.D. range identification.
- All A.Y. McDonald Service Saddles meet A.W.W.A. standards.
- Use on cold water services only.

**■ For cast iron O.D. PVC Pipe (AWWA C-900) - All Brass Saddle**

A. Y. McDonald Mfg. Co. 3895 and 3896 Service Saddles are designed to give a positive water-tight seal with full support to the PVC pipe, without cracking or distorting the pipe. **Order the correct saddles for your use from the following charts. Not for use with ductile iron, asbestos-cement or cast iron pipe or copper tube.** Installation instructions are provided with each saddle. Please read and follow instructions to ensure long lasting performance.



<b>MODEL 3895 (AWWA) MODEL 3896 (FNPT)</b>			
Nominal Size	Pipe O.D.		Tap Size
4"	4.80"	X	1/2", 3/4", 1", 1 1/2" or 2"
6"	6.90"	X	1/2", 3/4", 1", 1 1/2" or 2"
8"	9.05"	X	1/2", 3/4", 1", 1 1/2" or 2"

- Order Saddles by Model Number, Nominal Pipe Size and Tap Size (**Example: 3895 8" x 1"**).
- Contact factory for availability of 1/2" AWWA and 1/2" FNPT tap sizes.
- Contact factory for 1 1/4" tapped saddles.
- Contact factory for availability of BSPP tapped saddles.

**■ Materials**

- **Top and Bottom**  
85-5-5-5 cast brass per ASTM B62
- **Silicon Bronze Bolt**
  - 1/2" Slotted Hex Head  
5/16" - 18 UNC - 2A x 1 1/2" long  
One bolt for all 3/4" and 1" taps  
Two bolts for all 1 1/2" and 2" taps
- **Silicon Bronze Hinge Pin**
  - .25 diameter - Standard for all sizes
- **Outlet Style Color Code**  
AWWA threads - Green  
FNPT pipe threads - Yellow

**■ Sizes**

**C-900 Models 3895 (AWWA) and 3896 (FNPT):**

**Main Sizes:** 4", 6", 8", 10" and 12"

**Tap Sizes:** 1/2", 3/4", 1", 1 1/2", and 2" AWWA or FNPT  
Contact factory for other tap sizes.

**■ Notes**

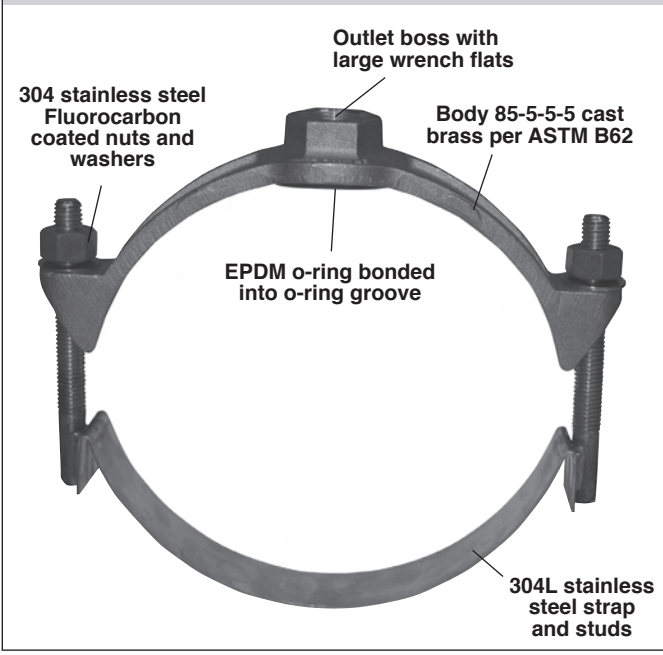
- Outlets style color coded (See "Materials" above).
- All Saddles have cast IPS Pipe O.D. range identification.
- All A. Y. McDonald Service Saddles meet A.W.W.A. standards.
- Use on cold water services only.

FOR C900 PVC PIPE

**Stainless Steel Single Strap Saddles with Brass Top**

A.Y. McDonald Mfg. Co. 3835 and 3836 Service Saddles with Wide Stainless Steel Band are designed for use on service line connections to cast iron O.D. PVC pipe AWWA C-900 water mains. The pressure capabilities equal, but do not exceed, the working pressure rating of the pipe, up to 200 PSIG.

**Model 3835 (AWWA) & 3836 (FNPT)- Stainless Steel**



**Materials**

- Body - 85-5-5-5 cast brass per ASTM B62
- Strap and Studs - 304L Stainless Steel
- Nuts and Washers - 304 Stainless Steel
- Nuts are supplied with Fluorocarbon coating

**Sizes**

- Main Sizes: 4", 6", 8", 10" and 12"
- Tap Sizes: 1/2", 3/4", 1" AWWA or FNPT on 4", 6", 8", 10" and 12" Saddles
- Contact factory for other tap sizes.

- Outlet Style Color Code
  - AWWA threads - Green
  - FNPT pipe threads - Yellow

**Notes**

- All Saddles have C-900 and pipe O.D. size identification.
- All A.Y. McDonald Service Saddles meet A.W.W.A. standards.
- Use on cold water services only.

Installation instructions are provided with each saddle. Please read and follow instructions to ensure long lasting performance.

**For cast iron O.D. PVC pipe (AWWA - C900) Stainless Steel Single Strap**

Order the correct saddles for your use from the following chart:

MODEL 3835 (AWWA)			
Nominal Size	Pipe O.D.		Tap Size
4"	4.80"	X	1/2", 3/4" or 1"
6"	6.90"	X	1/2", 3/4" or 1"
8"	9.05"	X	1/2", 3/4" or 1"
10"	11.10"	X	1/2", 3/4" or 1"
12"	13.20"	X	1/2", 3/4" or 1"

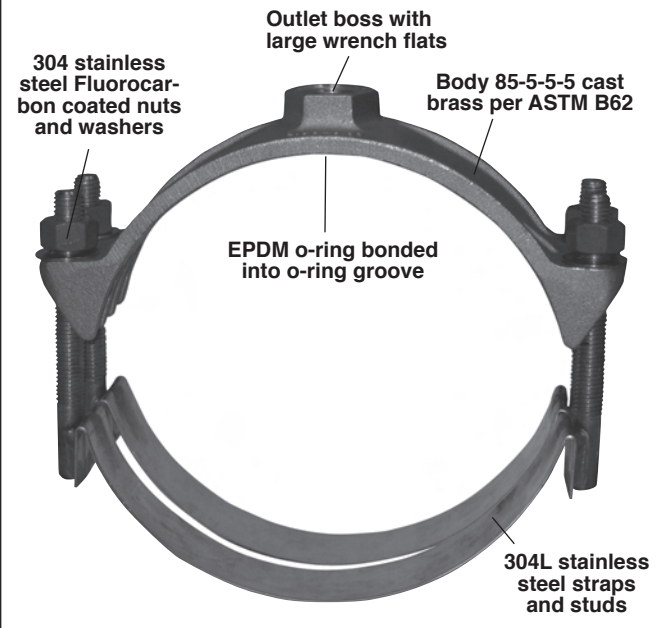
MODEL 3836 (FNPT)			
Nominal Size	Pipe O.D.		Tap Size
4"	4.80"	X	1/2", 3/4" or 1"
6"	6.90"	X	1/2", 3/4" or 1"
8"	9.05"	X	1/2", 3/4" or 1"
10"	11.10"	X	1/2", 3/4" or 1"
12"	13.20"	X	1/2", 3/4" or 1"

- Order Saddles by Model Number, Nominal Pipe Size and Tap Size (Example: 3835 8" x 1").
- Contact factory for availability of BSPP taps.
- Contact factory for availability of 1/2" or 1 1/4" Tapped Saddles.

**■ For cast iron O.D. PVC pipe (PVC - C900) Stainless Steel Double Strap**

A.Y. McDonald Mfg. Co. 3855 and 3856 Service Saddles with two Stainless Steel Bands are designed for use on service line connections to cast iron O.D. PVC pipe AWWA C-900 water mains. The pressure capabilities equal, but do not exceed, the working pressure rating of the pipe, up to 200 PSIG.

**Model 3855 (AWWA) & 3856 (FNPT) - Stainless Steel**



**■ Materials**

**Body** - 85-5-5-5 cast brass per ASTM B62  
**Strap and Studs** - 304L Stainless Steel  
**Nuts and Washers** - 304 Stainless Steel  
 Nuts are supplied with Fluorocarbon coating

**■ Sizes**

**Main Sizes:** 4", 6", 8", 10" and 12"  
**Tap Sizes:** 1/2", 3/4", 1", 1 1/2", and 2" AWWA or FNPT on 4", 6", 8", 10" and 12" Saddles  
 Contact factory for other tap sizes.

- **Outlet Style Color Code**  
 Green for AWWA threads  
 Yellow for FNPT pipe threads

**■ Notes**

- All Saddles have C-900 and pipe O.D. size identification.
- All A.Y. McDonald Service Saddles meet A.W.W.A. standards.
- Use on cold water services only.

Installation instructions are provided with each saddle. Please read and follow instructions to ensure long lasting performance.

**■ For cast iron O.D. PVC pipe (AWWA - C900) Stainless Steel Double Strap**

Order the correct saddles for your use from the following chart:

MODEL 3855 (AWWA)				MODEL 3856 (FNPT)			
Nominal Size	Pipe O.D.		Tap Size	Nominal Size	Pipe O.D.		Tap Size
4"	4.80"	X	1/2", 3/4", 1", 1 1/2" or 2"	4"	4.80"	X	1/2", 3/4", 1", 1 1/2" or 2"
6"	6.90"	X	1/2", 3/4", 1", 1 1/2" or 2"	6"	6.90"	X	1/2", 3/4", 1", 1 1/2" or 2"
8"	9.05"	X	1/2", 3/4", 1", 1 1/2" or 2"	8"	9.05"	X	1/2", 3/4", 1", 1 1/2" or 2"
10"	11.10"	X	1/2", 3/4", 1", 1 1/2" or 2"	10"	11.10"	X	1/2", 3/4", 1", 1 1/2" or 2"
12"	13.20"	X	1/2", 3/4", 1", 1 1/2" or 2"	12"	13.20"	X	1/2", 3/4", 1", 1 1/2" or 2"

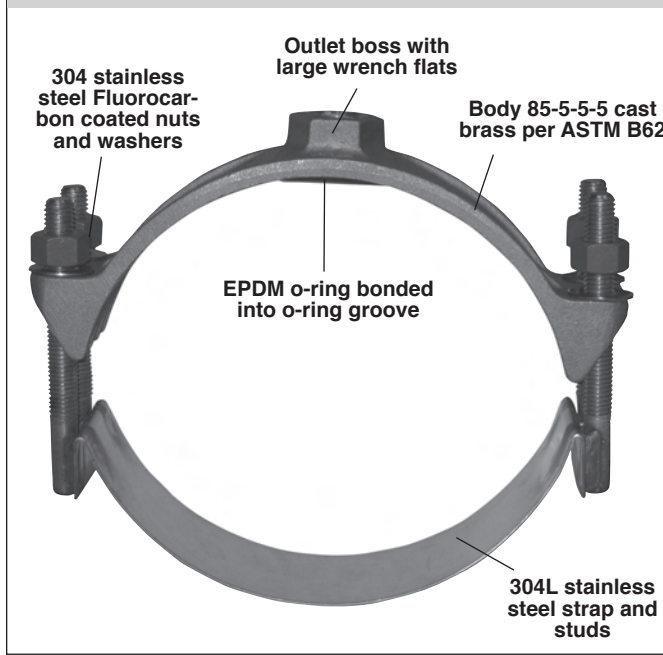
- Order Saddles by Model Number, Nominal Pipe Size and Tap Size (Example: 3855 8" x 1").
- Contact factory for availability of BSPP taps.
- Contact factory for availability of 1/2" or 1 1/4" Tapped Saddles.

FOR C900 PVC PIPE

## Wide Stainless Steel Strap Saddles with Brass Top

A.Y. McDonald Mfg. Co. 3845 and 3846 Service Saddles with Wide Stainless Steel Band are designed for use on service line connections to cast iron O.D. PVC pipe AWWA C-900 water mains. The pressure capabilities equal, but do not exceed, the working pressure rating of the pipe, up to 200 PSIG.

### Model 3845 (AWWA) & 3846 (FNPT) - Stainless Steel



Installation instructions are provided with each saddle. Please read and follow instructions to ensure long lasting performance.

### Materials

- Body** - 85-5-5-5 cast brass per ASTM B62
- Strap and Studs** - 304L Stainless Steel
- Nuts and Washers** - 304 Stainless Steel
- Nuts are supplied with Fluorocarbon coating

### Sizes

- Main Sizes:** 4", 6", 8", 10" and 12"
- Tap Sizes:** 1/2", 3/4", 1", 1 1/2", and 2" AWWA or FNPT on 4", 6", 8", 10" and 12" Saddles
- Contact factory for other tap sizes.

### Outlet Style Color Code

- AWWA threads - Green
- FNPT pipe threads - Yellow

### Notes

- All Saddles have C-900 and pipe O.D. size identification.
- All A.Y. McDonald Service Saddles meet A.W.W.A. standards.
- Use on cold water services only.

## For cast iron O.D. PVC pipe (AWWA - C900) Stainless Steel Wide Strap

Order the correct saddles for your use from the following chart:

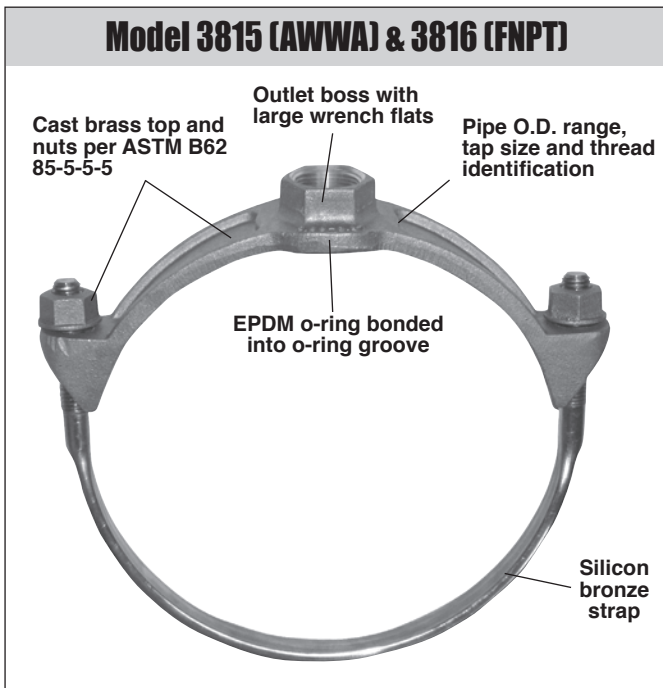
MODEL 3845 (AWWA)			
Nominal Size	Pipe O.D.		Tap Size
4"	4.80"	X	1/2", 3/4", 1", 1 1/2" or 2"
6"	6.90"	X	1/2", 3/4", 1", 1 1/2" or 2"
8"	9.05"	X	1/2", 3/4", 1", 1 1/2" or 2"
10"	11.10"	X	1/2", 3/4", 1", 1 1/2" or 2"
12"	13.20"	X	1/2", 3/4", 1", 1 1/2" or 2"

MODEL 3846 (FNPT)			
Nominal Size	Pipe O.D.		Tap Size
4"	4.80"	X	1/2", 3/4", 1", 1 1/2" or 2"
6"	6.90"	X	1/2", 3/4", 1", 1 1/2" or 2"
8"	9.05"	X	1/2", 3/4", 1", 1 1/2" or 2"
10"	11.10"	X	1/2", 3/4", 1", 1 1/2" or 2"
12"	13.20"	X	1/2", 3/4", 1", 1 1/2" or 2"

- Order Saddles by Model Number, Nominal Pipe Size and Tap Size (Example: 3845 8" x 1").
- Contact factory for availability of BSPP taps.
- Contact factory for availability of 1/2" or 1 1/4" Tapped Saddles.

**Single Bronze Strap Saddles**

A.Y. McDonald Mfg. Co. Model 3815 and 3816 Single Strap Service Saddles are designed for use on service line connections to ductile iron, asbestos-cement or cast iron O.D. pipe water mains. The pressure capabilities equal, but do not exceed, the working pressure rating of the pipe, up to 200 PSIG.



Installation instructions are provided with each saddle. Please read and follow instructions to ensure long lasting performance.

**Materials**

**Body** - 85-5-5-5 cast brass per ASTM B62  
**Strap** - Silicon bronze  
**Nuts with enlarged washer bearing surface**  
 85-5-5-5 cast brass per ASTM B62

**Sizes**

**Main Sizes:** 4", 6", 8", 10" and 12"  
**Tap Sizes:** 1/2", 3/4", and 1" AWWA or FNPT on 4", 6", 8", 10", and 12" Saddles  
 Contact factory for other tap sizes.

- **Outlet Style Color Code**  
 AWWA threads - Green  
 FNPT pipe threads - Yellow

**Notes**

- All Saddles have pipe O.D. size identification.
- All A.Y. McDonald Service Saddles meet A.W.W.A. standards.
- Use on cold water services only.

**For Ductile Iron Asbestos-Cement or Cast Iron O.D. Pipe - Single Strap**

Order the correct saddles for your use from the following chart:

<b>MODEL 3815 (AWWA) Single Strap</b>			
Nominal Size	Pipe O.D.		Tap Size
4"	4.74" - 5.40"	X	1/2", 3/4" or 1"
6"	6.84" - 7.50"	X	1/2", 3/4" or 1"
8"	8.99" - 9.67"	X	1/2", 3/4" or 1"
10"	11.04" - 12.12"	X	1/2", 3/4" or 1"
12"	13.14" - 14.58"	X	1/2", 3/4" or 1"

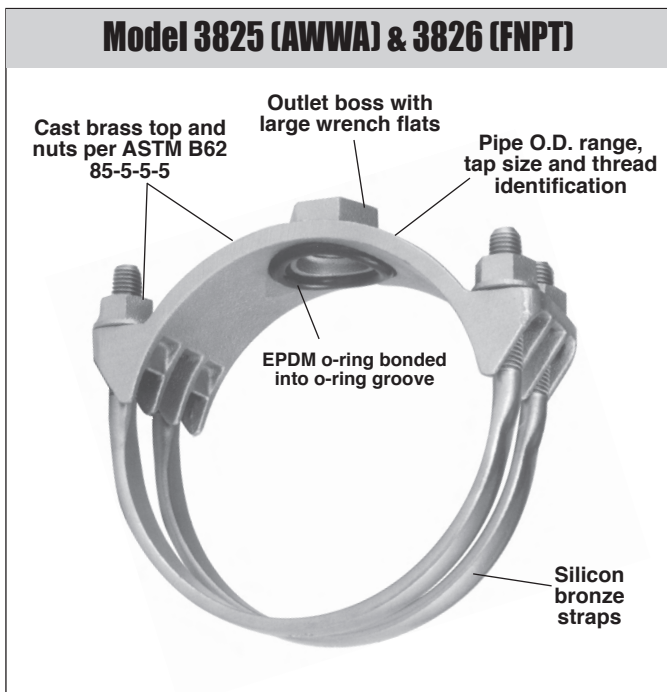
<b>MODEL 3816 (FNPT) Single Strap</b>			
Nominal Size	Pipe O.D.		Tap Size
4"	4.74" - 5.40"	X	1/2", 3/4" or 1"
6"	6.84" - 7.50"	X	1/2", 3/4" or 1"
8"	8.99" - 9.67"	X	1/2", 3/4" or 1"
10"	11.04" - 12.12"	X	1/2", 3/4" or 1"
12"	13.14" - 14.58"	X	1/2", 3/4" or 1"

- Order Saddles by Model Number, Nominal Pipe Size and Tap Size (Example: 3815 8" x 1").
- Contact factory for availability of BSPP taps.
- Contact factory for availability of 1/2" or 1 1/4" Tapped Saddles.

FOR DUCTILE IRON PIPE

## Double Bronze Strap Saddles

A.Y. McDonald Mfg. Co. Model 3825 and 3826 Double Strap Service Saddles are designed for use on service line connections to ductile iron, asbestos-cement or cast iron O.D. pipe water mains. The pressure capabilities equal, but do not exceed, the working pressure rating of the pipe, up to 200 PSIG.



### Materials

- Body** - 85-5-5 cast brass per ASTM B62
- Straps** - Silicon bronze
- Nuts with enlarged washer bearing surface** - 85-5-5 cast brass per ASTM B62

### Sizes

- Main Sizes:** 4", 6", 8", 10", 12" and 16"
- Tap Sizes:** 1/2", 3/4", 1", 1 1/2", and 2" AWWA or FNPT on 4", 6", 8", 10", 12" and 16" Saddles
- Contact factory for other tap sizes.

- Outlet Style Color Code**
  - AWWA threads - Green
  - FNPT pipe threads - Yellow

### Notes

- All Saddles have pipe O.D. size identification.
- All A.Y. McDonald Service Saddles meet A.W.W.A. standards.
- Use on cold water services only.

Installation instructions are provided with each saddle. Please read and follow instructions to ensure long lasting performance.

## For Ductile Iron Asbestos-Cement or Cast Iron O.D. Pipe - Double Strap

Order the correct saddles for your use from the following chart:

MODEL 3825 (AWWA) Double Strap		
Nominal Size	Pipe O.D.	Tap Size
4"	4.74" - 5.40"	X 1/2", 3/4", 1", 1 1/2" or 2"
6"	6.84" - 7.50"	X 1/2", 3/4", 1", 1 1/2" or 2"
8"	8.99" - 9.67"	X 1/2", 3/4", 1", 1 1/2" or 2"
10"	11.04" - 12.12"	X 1/2", 3/4", 1", 1 1/2" or 2"
12"	13.20" - 14.38"	X 1/2", 3/4", 1", 1 1/2" or 2"

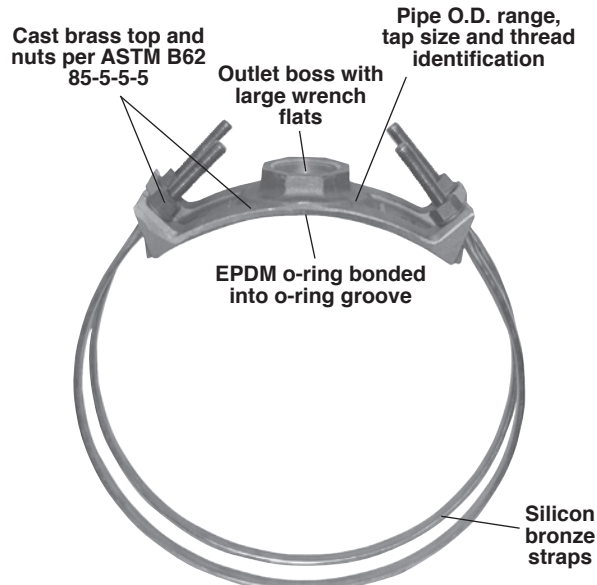
MODEL 3826 (FNPT) Double Strap		
Nominal Size	Pipe O.D.	Tap Size
4"	4.74" - 5.40"	X 1/2", 3/4", 1", 1 1/2" or 2"
6"	6.84" - 7.50"	X 1/2", 3/4", 1", 1 1/2" or 2"
8"	8.99" - 9.67"	X 1/2", 3/4", 1", 1 1/2" or 2"
10"	11.04" - 12.12"	X 1/2", 3/4", 1", 1 1/2" or 2"
12"	13.20" - 14.38"	X 1/2", 3/4", 1", 1 1/2" or 2"

- Order Saddles by Model Number, Nominal Pipe Size and Tap Size (Example: 3825 8" x 1").
- Contact factory for availability of BSPP taps.
- Contact factory for availability of 1/2" or 1 1/4" Tapped Saddles.

**Double Bronze Strap Saddles**

A.Y. McDonald Mfg. Co. Model 3825A&B and 3826A&B Double Strap Service Saddles are designed for use on service line connections to ductile iron, asbestos-cement or cast iron O.D. pipe water mains. The pressure capabilities equal, but do not exceed, the working pressure rating of the pipe, up to 200 PSIG.

**Model 3825A & B / Model 3826A & B**



**Materials**

**Body** - 85-5-5-5 cast brass per ASTM B62  
**Straps** - Silicon bronze  
**Nuts with enlarged washer bearing surface**  
 85-5-5-5 cast brass per ASTM B62

**Sizes**

**Main Sizes:** 16"  
**Tap Sizes:** 1/2", 3/4", 1", 1 1/2", and 2" AWWA or 16" FNPT Saddles  
 Contact factory for other tap sizes.

- **Outlet Style Color Code**  
 AWWA threads - Green  
 FNPT pipe threads - Yellow

**Notes**

- All Saddles have pipe O.D. size identification.
- All A.Y. McDonald Service Saddles meet A.W.W.A. standards.
- Use on cold water services only.

Installation instructions are provided with each saddle. Please read and follow instructions to ensure long lasting performance.

**For Ductile Iron Asbestos-Cement or Cast Iron O.D. Pipe - Double Strap**

Order the correct saddles for your use from the following chart:

MODEL 3825A (AWWA) MODEL 3826A (FNPT) Double Strap				MODEL 3825B (AWWA) MODEL 3826B (FNPT) Double Strap			
Nominal Size	Pipe O.D.		Tap Size	Nominal Size	Pipe O.D.		Tap Size
16"	17.40" - 18.40"	X	1/2", 3/4", 1", 1 1/2" or 2"	16"	18.50" - 19.25"	X	1/2", 3/4", 1", 1 1/2" or 2"

- Order Saddles by Model Number, Nominal Pipe Size and Tap Size (Example: 3825A 16" x 1").
- Contact factory for availability of BSPP taps.
- Contact factory for availability of 1/2" or 1 1/4" Tapped Saddles.

**■ Brass Bushings For Saddles**

<b>MODEL 47011</b> AWWA x AWWA Bushing			
Model Number	Male AWWA		Female AWWA
47011	3/4"	X	1/2"
47011	1"	X	3/4"
47011	1 1/4"	X	3/4"
47011	1 1/4"	X	1"
47011	1 1/2"	X	3/4"
47011	1 1/2"	X	1"
47011	2"	X	3/4"
47011	2"	X	1"
47011	2"	X	1 1/4"
47011	2"	X	1 1/2"

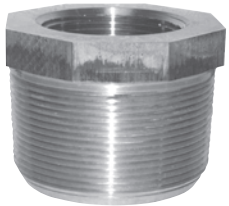


**47011**  
**2" x 1 1/2"**



**47011**  
**3/4" x 1/2"**

<b>MODEL 47014</b> AWWA x NPT Bushing			
Model Number	Male AWWA		Female NPT
47014	3/4"	X	1/2"
47014	1"	X	3/4"
47014	1 1/2"	X	1 1/4"
47014	2"	X	1 1/4"
47014	2"	X	1 1/2"

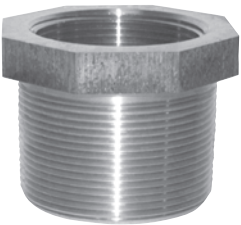


**47014**  
**2" x 1 1/2"**



**47014**  
**3/4" x 1/2"**

<b>MODEL 47041</b> NPT x AWWA Bushing			
Model Number	Male NPT		Female AWWA
47041	1"	X	3/4"
47041	1 1/4"	X	3/4"
47041	1 1/4"	X	1"
47041	1 1/2"	X	3/4"
47041	1 1/2"	X	1"
47041	2"	X	3/4"
47041	2"	X	1"
47041	2"	X	1 1/4"
47041	2"	X	1 1/2"



**47041**  
**2" x 1 1/2"**



**47041**  
**1" x 3/4"**