



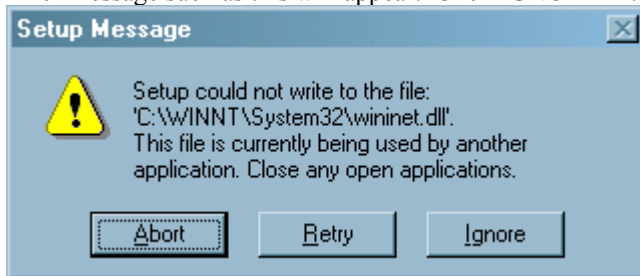
Version 3.2.2
User's Manual
For Window 95, 98 and NT

QUICK INSTALL

To start using FIRE FLOW TESTER you must install the programs and data onto your hard disk. The installation CD will install this software onto your computer quickly and easily.

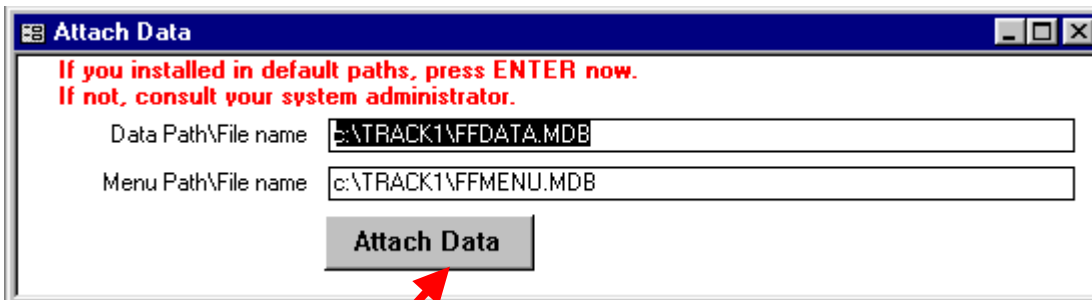
Close all running programs. Especially Virus protection programs. If you are installing this software on an NT operating system, log on as Administrator with full read/write privileges.

1. Insert CD.
2. From the START/RUN menu, enter **D: SETUP.EXE**.
3. The recommended default installation can be done by using the ENTER key to answer all the questions.
4. Sometimes the setup program will try to install DLL files that already exist and are in use at the time of installation. Error message such as this will appear. Click IGNORE if this message appears and the setup will continue.



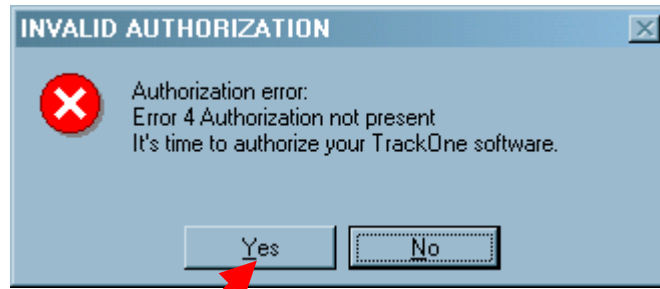
Starting the Application

1. **Start Menu**, select **Programs** and **Fire Flow Tester**.
2. Because this is a new installation, the message ATTACH DATA appears. Press ENTER three times or click on ATTACH DATA.



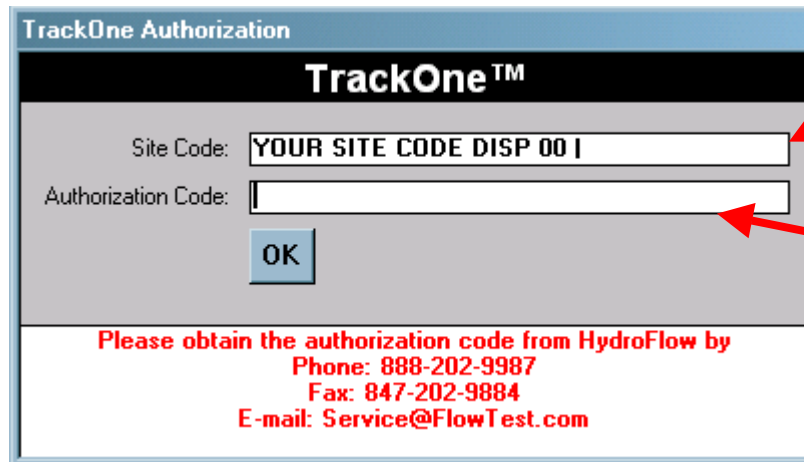
For a quick install on one computer, click here or press return.

- The first time you run Fire Flow Tester on a computer the following authorization message appears.



Click "Yes".

- Call, fax or email the displayed **Site Key** to us. It takes only a few moments for us to generate an Authorization Code to unlock your software.



Call us with the number that appears in this box on your screen.

We'll provide you with the Authorization Code you need here.

- Enter the **Authorization Code** provided by us.
- You are now ready to run the application. Congratulations! Check out the sample data and enter your own. When you are ready to get down to the business of entering your own system data, follow the *DELETE DEMO DATA* below. You need a password to delete the data so that no one will accidentally or maliciously destroy useful data. Call us for your *DELETE DATA* password.

ATTENTION: The function *DELETE DEMO DATA* will delete all the records you have entered to date; not just the sample data that came with the evaluation copy. If you have entered a sizable amount of information during the evaluation period and you wish to keep it, you can delete *SAMPLE* data records individually.

Back up your data file.

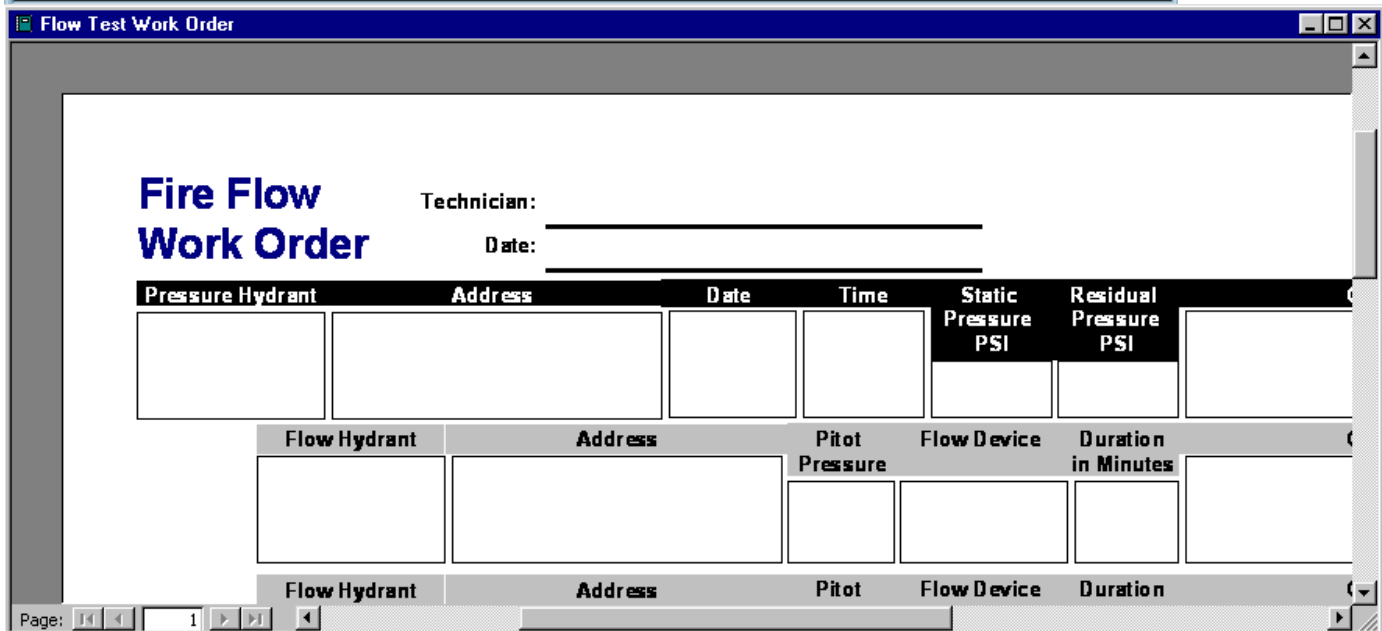
Your data file with all your data is located in C:\Track1\ffdata.mdb. This is the file that you should back up frequently. **Ffdata.mdb.**

FIRE FLOW TESTER (FFT) demonstration

1. Print blank fire flow test work orders.



Click here to send blank fire flow test form to your screen.



2. Send form to printer. (CTL P) Now go out and do some fire flow tests. Use the form to record test results.

3. Enter Flow Test Results from form into FFT.

2. Assign ID and address to pressure hydrant. Click hit TAB or ENTER after each entry and follow the tab order.

4. Assign ID and address to flow hydrant.

1. Click the "+" button to enter a new flow test record.
3. Enter pressure hydrant info into FFT from work order.
5. Enter flow hydrant info and flow device here.

Hint: You can scroll through hydrant flow test records by clicking on the arrows or entering a record number in the white box.

Hint: After multiple records have been entered, you can scroll through them by clicking on the down arrow next to the yellow look up field.

4. Flow Devices

Enter Fire Flow Test Results

Look Up: Graph Calculate Refresh +

Pressure Hydrant: Entered By:
Address:

Testing Info
By:
Date:
Time:

Pressure PSI
Static:
Residual:

NFPA AA

Comments:

Total GPM: **1,026** Predicted Flow @ 20 **1,675** Gals Used: **2,012**

Flow Hydrant	Address/Street	Pitot Flow Device	Duration GPM
ABM-02	1972 S. ODESY	37	2
*			

Record: of 1

Record: of 59

Flow Device	Device Description
2.5N	2 1/2" Nozzle, .90 Coefficient
4.5P	4 1/2" Pumper Port, .90 Coefficient
4P	4" Pumper Port, .90 Coefficient
A	2 1/2" Hose Monster®
B	4" Hose Monster®
C	4 1/2" Hose Monster®

The **Flow Device** is used by FFT to determine flow rate. It uses the orifice diameter, coefficient and pitot pressure.

Hint: click the down arrow here to select from the list of flow devices.

Or from the keyboard; touch ALT-DOWN ARROW to do the same thing.

Which Flow Devices can be used?

- Any Hose Monster® (2 ½”, 4”, 4 ½”)
- Any UL Nozzle Insert™ (1 1/8”, 1 ¾”)
- Hydrant nozzle and hand-held pitot
- Hydrant pumper port and hand-held pitot
- Create your own device

FFT comes preloaded with the popular flow devices:

- Hose Monsters; both 2 ½”, 4” and 4 ½”
- Hydrant Nozzles
 - 2½ ” .9 coefficient
 - 4” .9 coefficient
 - 4½” .9 coefficient

You can create your own flow devices.

2. Assign an ID.

Follow the TAB/ENTER order for Description, Orifice Diameter and Coefficient.

1. Click “+” to enter a new flow device.

When you enter flow test results and select a Flow Device, FFT uses orifice diameter and coefficient to calculate flow rates.

(flow rate = 29.83 * D² * Coefficient * P^{0.5})

Reporting

5. FFT automatically calculates and extrapolates.

Look Up: **ABM-01** Graph Calculate Refresh +

Pressure Hydrant: **ABM-01** Entered By: **GEORGE**
Address: **2001 S. ODESY**

Testing Info
By: **MARTHA**
Date: **06/04/2001**
Time: **8:05 AM**

Pressure PSI
Static: **82**
Residual: **57**

NFPA **AA**

Comments:

Total GPM: **1,026** Predicted Flow @ 20: **1,675** Gals Used: **2,052**

Flow Hydrant Address	Street	Pitot Flow Device	Duration	GPM
ABM-02	1972 S. ODESY	37	A	1026
*				0

Record: 1 of 1

Record: 59 of 59

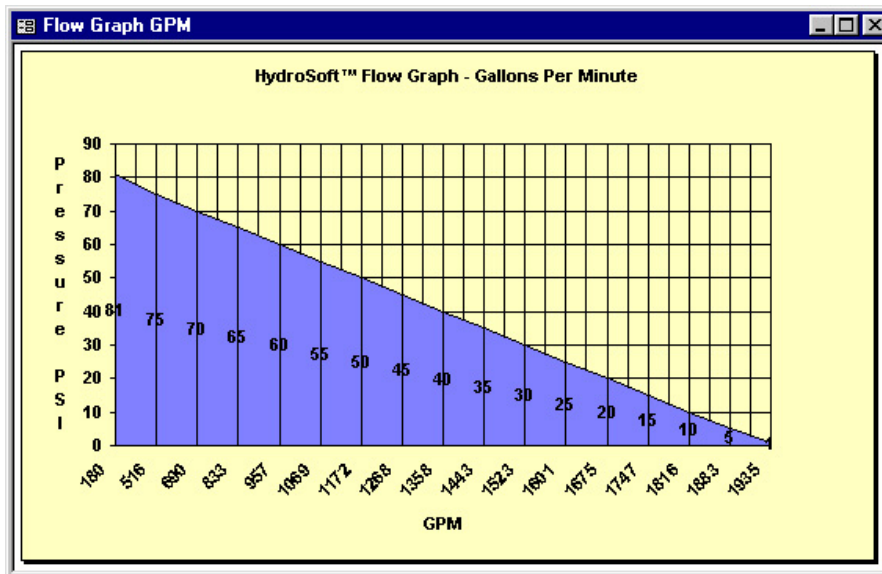
Test flow calculated.

Predicted flow extrapolated.

NFPA color code determined.

Total water used for test.

Click GRAPH button at top of page to display instant graph.



6. Print reports.



Check out report selections here.

7. Useful things to know.



Use DETACH TABLES when you plan to locate your data on a separate server. Usually this is done when networking.

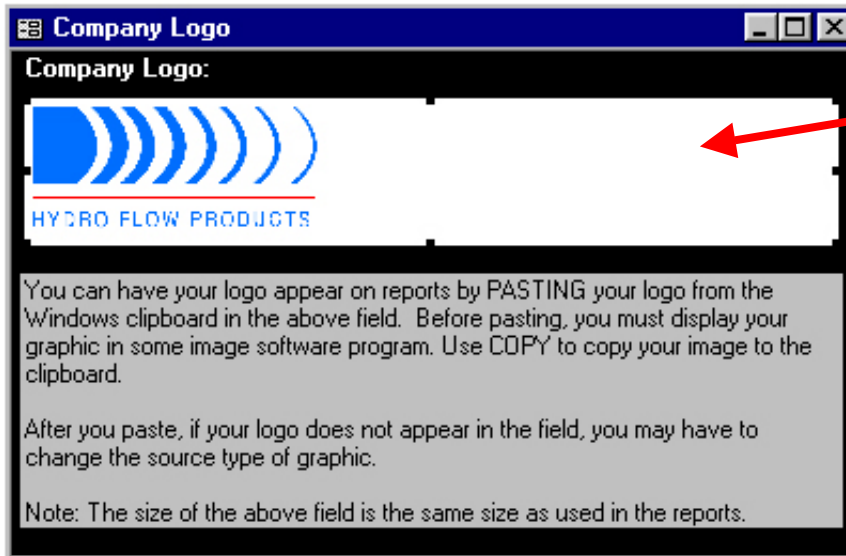
OPTION TEST and RE-AUTHORIZE might be used by us in trouble shooting.

8. Add your company logo to reports.



Click here

Then here



It's easy. Just cut and paste.

Copy your logo from a program such as Paint or Adobe PhotoDeluxe and paste it here. It will print on all your reports.