



ALKALINITY TEST KIT

DIRECT READING TITRATOR METHOD

MODEL WAT-DR • CODE 4491-DR

QUANTITY	CONTENTS	CODE
50	BCG-MR Indicator Tablets	T-2311-H
60 mL	*Alkalinity Titration Reagent B	*4493DR-H
1	Titration Tube, 5 mL, w/cap	0647
1	Direct Reading Titrator, 0-200 range	0382
1	Alkalinity Endpoint Color Chart	4491-CC

***WARNING:** Reagents marked with a * are considered hazardous substances. Material Safety Data Sheets (MSDS) are supplied for these reagents. For your safety, read label and accompanying MSDS before using.

Read LaMotte Direct Reading Titrator Manual before proceeding. The Titrator is calibrated in terms of total alkalinity expressed as parts per million (ppm) Calcium Carbonate (CaCO_3). Each minor division on the Titrator scale equals 4 ppm CaCO_3 .

To order individual reagents or test components, use the specified code number.

NOTE: When testing swimming pool water, consult an Acid Demand Index to determine if the total alkalinity is too high. The Index will indicate the recommended amount of acid required to offset high alkalinity content.

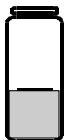
This test set provides total alkalinity readings only.

(Continued on the next page...)

ALKALINITY TEST PROCEDURE

1.

Fill the titration tube (0647) to the 5 mL line with the sample water.



2.

Add one BCG-MR Indicator Tablet (T-2311).



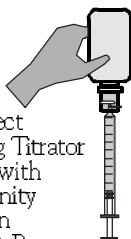
3.

Cap and mix until tablet dissolves. Solution will turn blue-green.



4.

Fill Direct Reading Titrator (0382) with *Alkalinity Titration Reagent B (4493).



5.

Insert the Titrator into the center hole of the test tube cap.



6.

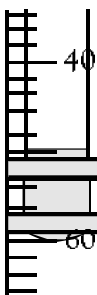
While gently swirling the tube, slowly press the plunger to titrate until the solution color changes from blue-green to purple. Consult Alkalinity Endpoint Color Chart (4491-CC).



7.

Read the test result where the plunger tip meets the Titrator scale. Record as ppm Total Alkalinity in ppm Calcium Carbonate (CaCO_3).

Result =
60 ppm



NOTE:

If the plunger tip reaches the bottom line on the scale (200 ppm) before the endpoint color change occurs, refill the Titrator and continue the titration.

When recording the test result, be sure to include the value of the original amount of reagent dispensed (200 ppm).

LaMOTTE COMPANY

Helping People Solve Analytical Challenges®

PO Box 329 • Chestertown • Maryland • 21620 • USA
800-344-3100 • 410-778-3100 (Outside U.S.A.) • Fax: 410-778-6394
Visit us on the web at www.lamotte.com