

DL75

FLOWINSPECTOR™

Software Guide for the
DL75 Data Logger System



Version 1.7

SeaMetrics

DL75

FLOWINSPECTOR™

**Software Guide for the
DL75 Data Logger System**

FlowInspector™
Laptop Software
Version 1.7

SeaMetrics


19026 72nd Avenue South • Kent, WA 98032, USA
(P) 253.872.0284 (F) 253.872.0285 1.800.975.8153
www.seametrics.com

June, 2004

COPYRIGHT AND TRADEMARK INFORMATION

All information presented in this manual is copyrighted ©2003 by SeaMetrics Flow Meters and Controls™ of Kent, WA U.S.A.

All rights are reserved; no pages or information may be copied or reproduced by any means without written permission from SeaMetrics. All information is proprietary, is subject to change, and should not be construed as a commitment by SeaMetrics.

Seametrics, FlowInspector and FlowRetriever are trademarks of Seattle Metrics, Inc. All other products or name brands mentioned are the property of their respective holders.

This software is furnished under license and may only be used in accordance with the terms of that license.

Printed in the U.S.A.

TABLE OF CONTENTS

Introduction	Page 1
Hardware Requirements	Page 2
Installation	Page 3
Using FlowInspector Software	
Main Screen Layout	Page 4
Logger Setup	Page 5
Downloading From the Logger	Page 8
Selecting the File to View	Page 9
Viewing the Entire File	Page 10
Selecting a Time Period	Page 11
Viewing the Selected Data	Page 13
Exporting Data to Spreadsheet	Page 14
Printing the Data	Page 16

The FlowInspector Version 1.7 software is designed as part of the SeaMetrics DL75 Datalogger system. This software is used to set up the Datalogger and to download data files from it. It can then be used to view, graph, chart, and print the data in several formats.

FlowInspector Version 1.7 software allows you to do all of the following:

- Set up the Datalogger by selecting measurement intervals, meter factor (k-factor), and stop/rollover when full
- Name the logger and identify the file
- Download data from the logger
- Choose flow time and volume units
- Display flow data in graph format
- Display and manipulate previously-collected flow data files stored on the hard drive
- Zoom to graph smaller time segments with greater clarity
- Show maximum, minimum, and average flow rates for any selected time period
- Show daily flow totals in tabular form
- Export data in text file (.txt) and spreadsheet (.xls) formats
- Print data reports

HARDWARE REQUIREMENTS

FLOWINSPECTOR REQUIRES A PC-COMPATIBLE
COMPUTER WITH:

- Windows 98, NT, 2000, or XP
- CD-ROM drive
- 800 x 600 or better screen resolution (recommended)
- Serial connection port or USB/serial adaptor
- SeaMetrics data cable

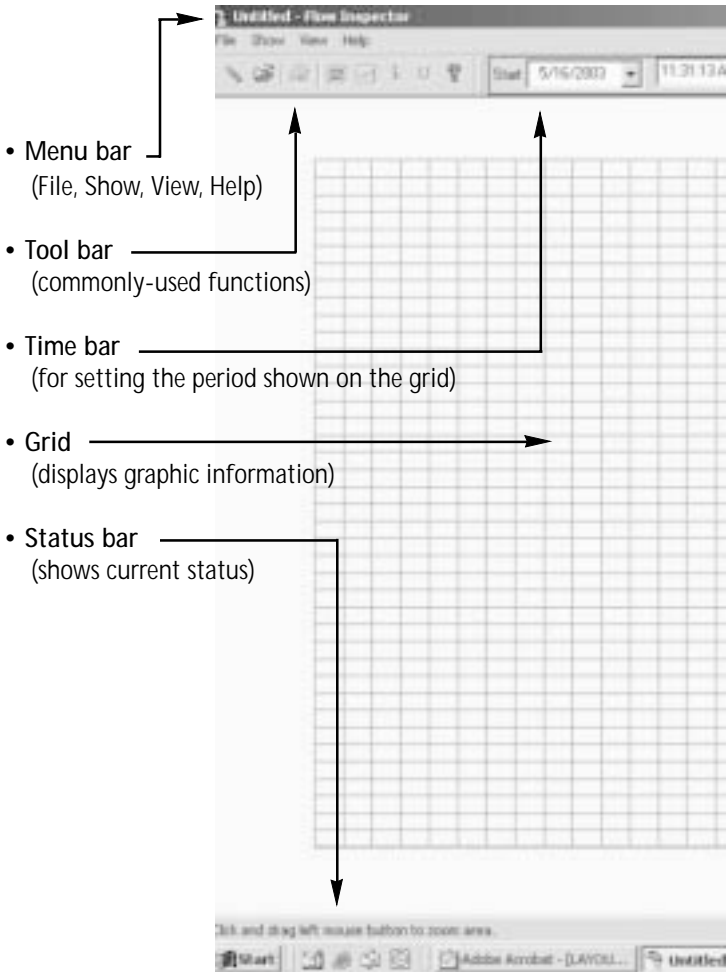
To install FlowInspector:

1. Close all other programs running on your computer.
2. Put the CD-ROM in your drive
3. If your computer is not set for autoloading, open the CD drive and run setup.exe
4. When FlowInspector is finished loading, click **Next**.
5. Fill in the User Information. Use the serial number from the CD case. Click **Next**.
6. Follow the directions to accept or to change the installation directory location.
7. Select the **Setup Type**, which is normally **Typical**.
8. Follow the instructions to select the Program Folder.
9. Click **OK** when message regarding Palm utilities is displayed (not needed for v.1.7).
10. Click **Finish** to complete.

USING FLOWINSPECTOR SOFTWARE

MAIN SCREEN LAYOUT

To open FlowInspector, double click on the icon on your laptop or in the programs listed on the Start menu. When it loads, you will see a graphic screen like the one shown below.



LOGGER SETUP

First connect the data cable between the COM1 serial port of the computer and the logger, using SeaMetrics cable DC3. The serial connector end goes to the computer, and the three-pin end goes into the matching black socket on the DL75. Remove the dust cover to insert the connector.

Once the cable is connected, bring up the FlowInspector main screen. Click on **File**, then on **Setup Datalogger**. The datalogger setup box will appear.



Start Date / Start Time: These are the date and time that the logger was initially set up, based on the real time clock of the computer used to set it up. If this is the first use of this logger and you want to make the date and time current, you can go to the Start New Session button at the bottom of this box. Note however that clicking on this button will erase any data stored in the logger.

K-factor: This is the number of pulses per gallon that the meter produces. For a SeaMetrics flow meter, get the number from the meter fitting (80-Series flow meters) or the k-factor table in the instruction manual (100/200 Series). [NOTE: If you are calculating your own k-factor, be sure to use pulses per gallon, as this is the standard regardless of the meter. It does not prevent processing the data in other units on the computer.]

Datalogger Number: This is the numerical identifier for the Datalogger. Assign any number you choose, up to six digits.

ID: This is a name or installation location you choose to help in identification at a later time (for instance, "Pump Station 3").

Cycle: Choose the frequency of recording (in seconds), from 15 to 240. Shorter times provide a smoother flow curve but shorten the number of days until the logger memory is full.

If there is a flow peak in the middle of a cycle time, its maximum flow will not be recorded as such, since it will be averaged into the reading for the period. Note however that the total will be accurate for any cycle time, since every input pulse is included in the count.

See the table below for the maximum number of days that the logger can hold at each cycle time setting.

Data in Storage (in Days)	Cycle Time (in Seconds)
11	15
22	30
45	60
90	120
180	240

Stop when Full: If this box is checked, the DL75 will stop reading when its memory is full. If the box is not checked, it will begin over-writing the oldest data when its memory is full. However, the running total from the beginning of the session remains correct even if data is overwritten.

Start New Session: CAUTION! Do not click on this button unless you wish to erase all previous data in the logger, reset the totalizer, and begin an entirely new session.

OK: Click OK to exit without saving changes.

DOWNLOADING FROM THE LOGGER

Connect the data cable from the computer to the logger. Bring up the FlowInspector main screen and click on **File**, then **Download from Datalogger**. When the data has been transferred, it will immediately show as a flow rate graph on the grid pattern.

Choosing Units

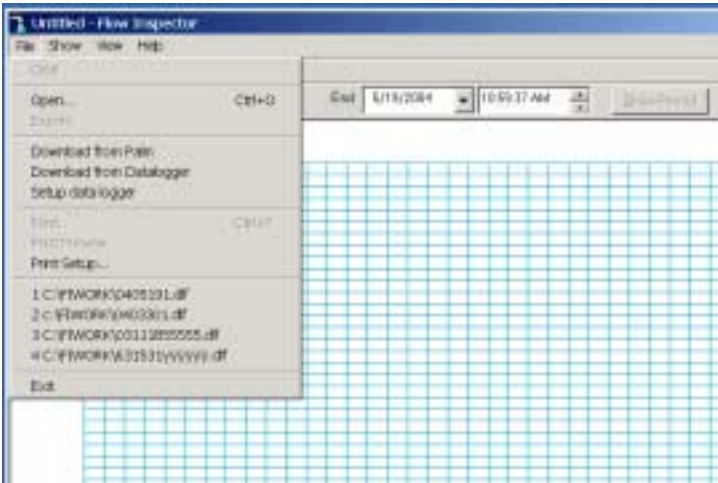
From the main screen, click on **Show**, then **Units**. The box below will come up. The top row indicates volume units (left to right: milliliters, liters, gallons, imperial gallons, cubic feet, cubic meters, million gallons, and acre feet). The bottom row indicates time units (left to right: seconds, minutes, hours, days).



Choose the desired volume unit, then the desired time unit and click **OK**. These choices can be changed at any time with the same logger data. All graphs and tables will display in the selected units.

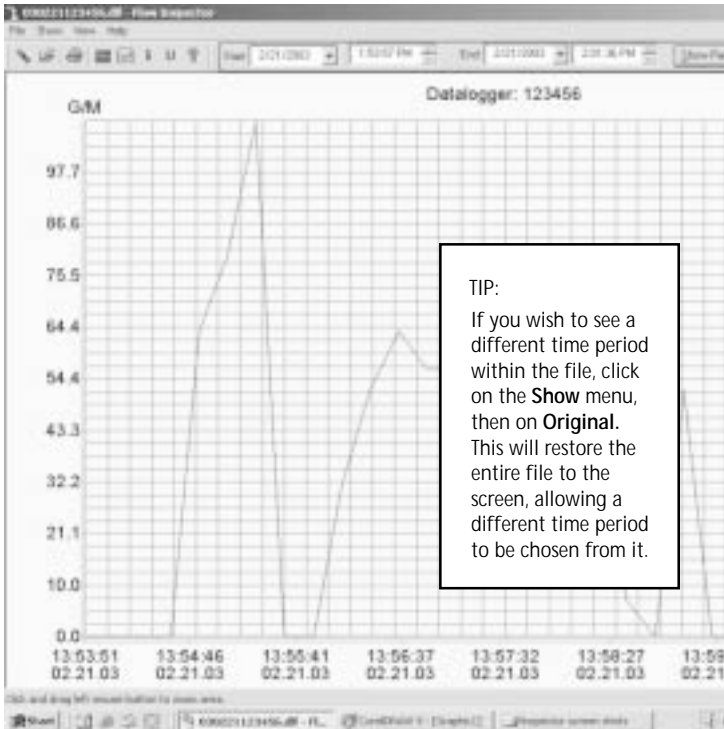
SELECTING THE FILE TO VIEW

From the main screen, click on File. Next click on Open, and select file. (File names= year/month/day/logger number)



VIEWING THE ENTIRE FILE

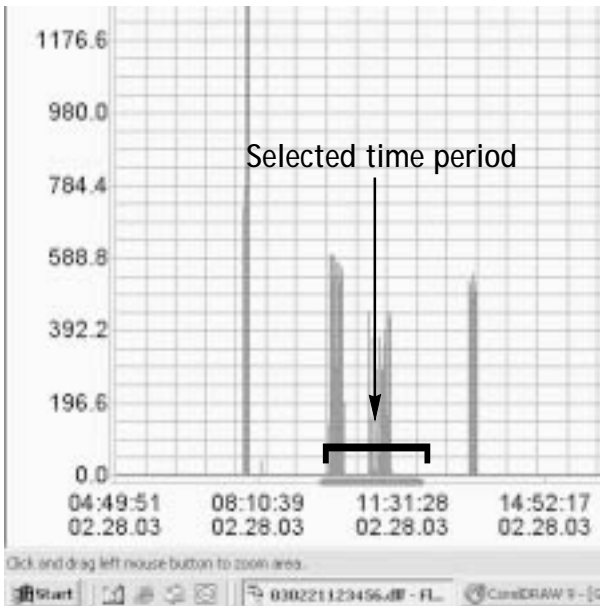
The file will appear as a graph on the main page. This is a graph of the entire period that the file includes, scaled to fit the main page grid. If the time period is long, the graph will have a spiky appearance that makes it difficult to use without scaling down to a shorter time period. The next section explains how to choose any specific portion of the graph to study more closely.



SELECTING A TIME PERIOD

Select by Zoom

The simplest and most intuitive way to select a time period is by using the zoom feature. Pick the approximate start date and time desired, then click at that point on the line at the very bottom of the main grid page. When you do this, a magnifying glass icon should appear. If you hold down the left mouse key and drag to the right, a blue line will appear. Drag the end of this line to your desired end point and release. The time period selected will match the blue line, and it will expand to fill the entire grid page. You can repeat this process to zoom in to shorter and shorter time periods. [NOTE: To restore the full time period, click on the **Show** menu, then **Original**.]

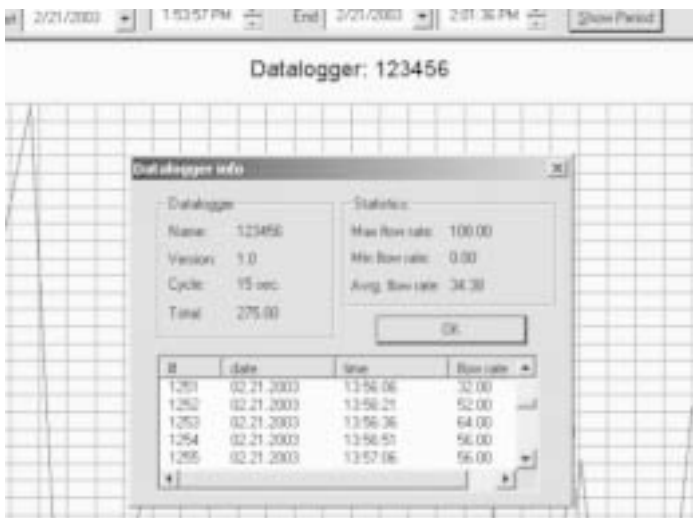


Select by Date Entry

This is the preferred method if the desired period is known exactly. Find the time bar at the top of the main grid. (See the "Main Screen Layout" illustration on page 4 if you have trouble finding it). Enter the Start date and time and the End date and time in the appropriate boxes. Then click on the **Show Period** button. The selected period will immediately expand to fill the main page grid.

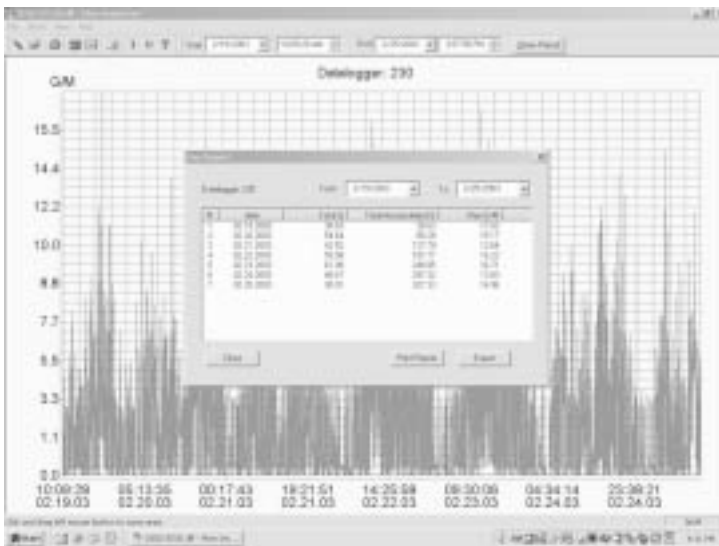
More Information

To see more detailed numerical information on the selected period than is shown on the graph, click **Show** and **More Info**. This brings up a box (see diagram below) that has maximum, minimum, average, and total for the period, as well as a table of the rate values of each reading in the period.



VIEWING THE SELECTED DATA

To see daily totals for the selected period, click **Show** and then **Day Report**. This brings up a box that shows daily totals and maximum daily flow rate in table format. You may adjust the "From" and "To" dates to view only the records you are interested in.

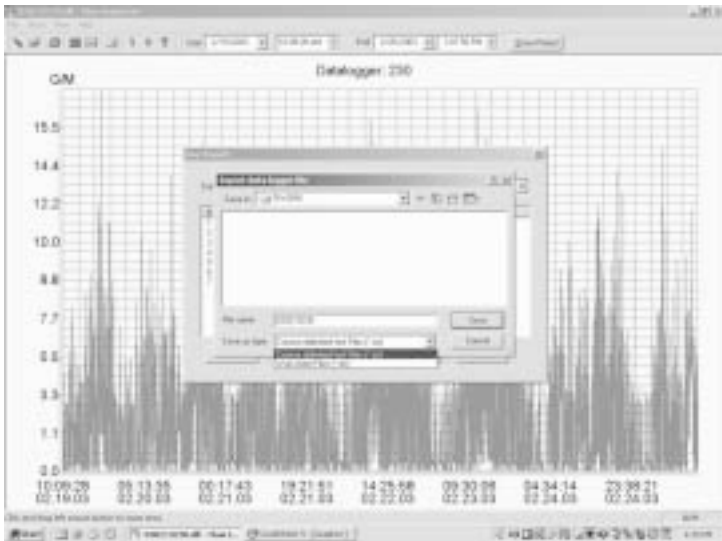


This report can be easily printed by clicking on the **Print Report** button on the box. [NOTE: If text prints off the page, check your printer settings.]

EXPORTING DATA TO SPREADSHEET

Sometimes it is desirable to create a spreadsheet using the raw flow readings. this allows a wide variety of custom manipulation of the data. You may export the data in your choice of two formats: Excel spreadsheet or comma delimited text files (that can then be converted to an Excel spreadsheet). Exporting to Excel can take up to ten minutes or more as large amounts of data are organized into spreadsheet format. Thus, for those familiar with importing comma delimited files into Excel, this method is preferable because of its significantly faster rate of transfer.

Begin either process by clicking on **Export** in the **Export Day Report** screen. the following screen will appear:



For **Comma Delimited Export**: From the Day Report screen, click on **Export**. Select the **Save in** location, then under **Save as type**, select **Comma delimited text files (*.txt)**. Click **Save**. The experienced Excel user can then import the resulting file into Excel.

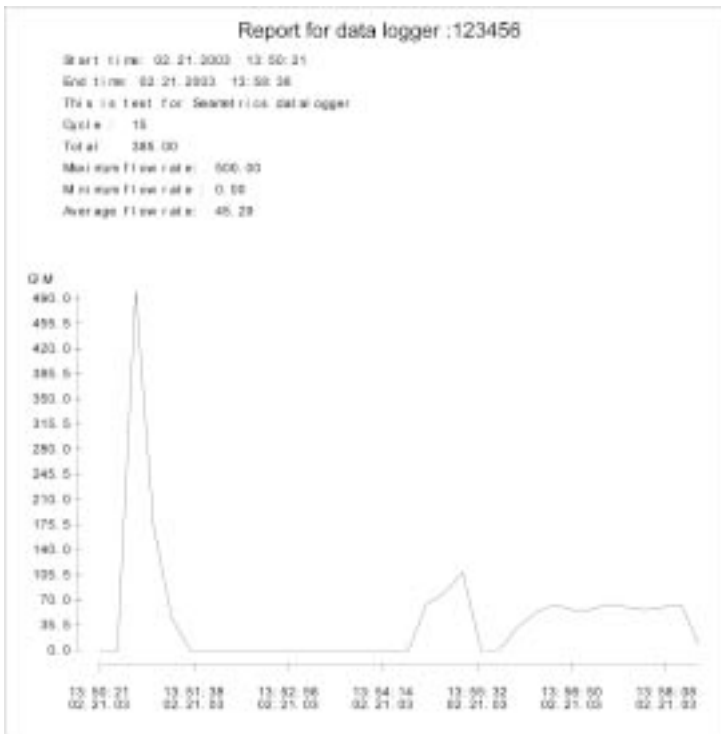
For **Excel Spreadsheet Export**: From the Day Report screen, click on **Export**. Select the **Save in** location, then under **Save as type**, select the **Worksheet Files (*.xls)**. Click **Save**. The Save process may take several minutes, depending on the size of your data file. Once complete, you may go to the Save location and open the spreadsheet in Excel.

The Excel spreadsheet will automatically format in columns. All of the normal spreadsheet functions can be used on this data, such as custom averaging or oddtime totalization (average flow rate and multiply by the time span). The illustration below shows a small spreadsheet created from exported data.

	A	B	C	D	E
1	Pump Station 5 Startup				
2					
3	0	02.21.2003	8:43:21	0.00	
4	1	02.21.2003	8:43:38	2.50	
5	2	02.21.2003	8:43:51	3.80	
6	3	02.21.2003	8:44:08	15.25	
7	4	02.21.2003	8:44:21	25.78	
8	5	02.21.2003	8:44:38	55.93	
9	6	02.21.2003	8:44:51	91.48	
10	7	02.21.2003	8:45:08	90.27	
11	8	02.21.2003	8:45:21	98.52	
12	9	02.21.2003	8:45:38	87.44	
13	10	02.21.2003	8:45:51	89.84	
14	Average Rate				50.14
15	Total				125.38
16					
17					

PRINTING THE DATA

To print out a flow graph, click **File** and then **Print** or **Print Preview**, if you wish to see what the graph will look like before printing it. In addition to the graph, FlowInspector prints out the start and end of the time period, the logger designation, the cycle length, total flow, maximum, minimum, and average (see below).





19026 72nd Avenue South
Kent, WA 98032 USA
(P) 253.872.0284 (F) 253.872.0285
1.800.975.8153

www.seametrics.com

LT-11739-C / 6-04