



FORCE™

BOILERS



PROSELECTPRODUCTS.COM

Gas-Fired
Cast Iron
Water Boiler

Oil-Fired
Cast Iron
Water Boiler

Gas-Fired
Cast Iron
Steam Boiler

VFO Oil-Fired
Cast Iron
Water Boiler



FORCE™

BOILERS

PROSELECT® FORCE™
proudly carries a variety
of durable boilers that
are trusted to withstand
the consistent demands
of everyday use.



Gas-Fired
Cast Iron
Water Boiler

pg. 3



Gas-Fired
Cast Iron
Steam Boiler

pg. 5



Oil-Fired
Cast Iron
Water Boiler

pg. 7



VFO Oil-Fired
Cast Iron
Water Boiler

pg. 9

When your customers need reliable heating
equipment, choose **PROSELECT FORCE.**



PROSELECTPRODUCTS.COM

Gas-Fired Cast Iron Water Boiler



Standard Features

- 84% AFUE – meets DOE 2021 regulations
- **NEW DESIGN!**
 - Can be piped from either side (industry standard locations)
 - Concealed controls and components
- Hydrolevel® Hydrostat™ 3200 combination high limit/circulator relay control
 - Built-in LWCO
 - Energy-saving thermal targeting software
 - Outdoor reset available (not included)
- Honeywell® S8610 electronic ignition control & Honeywell gas valve
- Grundfos® Alpha 2™ circulator
- Built-in draft diverter
- Drop-in replacement boiler in most installations
- Reliable cast iron heat exchanger
- Steel nipples
- Limited lifetime warranty on heat exchanger, 1-year manufacturer's warranty on parts
- Automatic vent damper

- Roll-out switch, spill switch, ASME relief valve (30 psi)
- Trapezoidal legs with nylon glides – permit easy positioning during installation

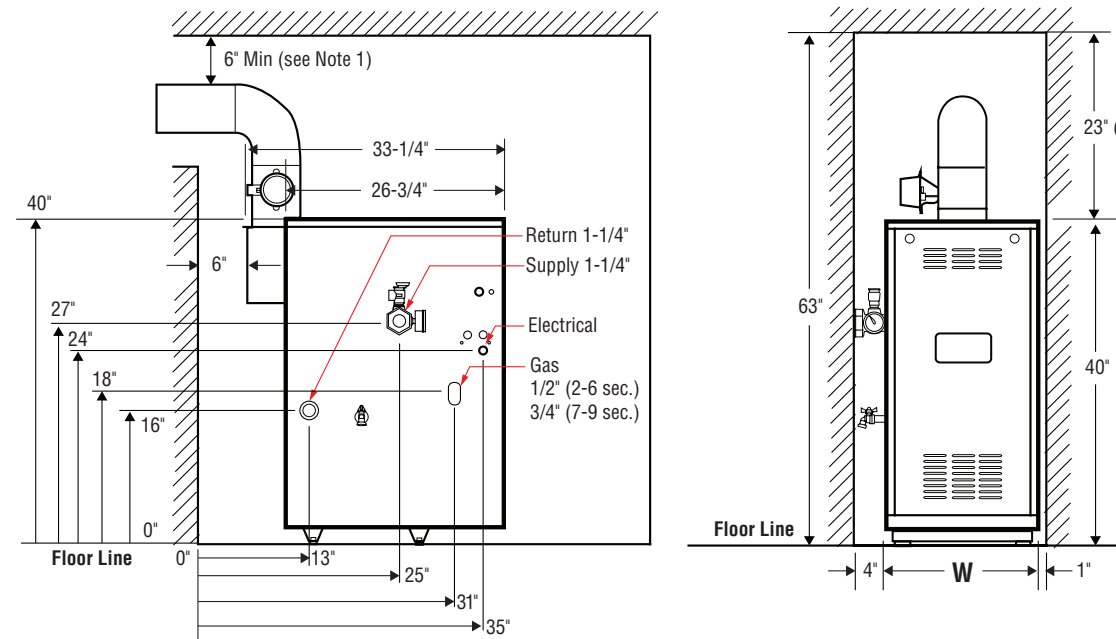
| Boiler Conversion Kits (0-2,000 ft. altitude) | |
|---|--------------------------|
| Natural Gas | Standard – from factory |
| LP Gas | 110197-01 (2 sections) |
| | 109874-01 (3-6 sections) |
| | 109874-02 (7-9 sections) |

Technical Information

| Model | Input ¹ (MBH) | DOE Heating Capacity (MBH) | Net AHRI Rating ² (MBH) | AFUE% | Flue Collar Diameter | Water Content (Gallons) | "W" Dimension (Inches) | Approx. Shipping Weight (lbs.) | Boiler Weight (lbs.) | ALT 1 |
|----------|--------------------------|----------------------------|------------------------------------|-------|----------------------|-------------------------|------------------------|--------------------------------|----------------------|---------------|
| FORCE02E | 38 | 32 | 28 | 84.0 | 4 | 1 | 14 | 202 | 143 | FORCE02ENRHG1 |
| FORCE03E | 68 | 57 | 50 | 84.0 | 4 | 2 | 14 | 254 | 180 | FORCE03ENRHG1 |
| FORCE04E | 102 | 85 | 74 | 84.0 | 5 | 3 | 16 | 304 | 231 | FORCE04ENRHG1 |
| FORCE05E | 136 | 114 | 99 | 84.0 | 6 | 4 | 19 | 357 | 284 | FORCE05ENRHG1 |
| FORCE06E | 170 | 142 | 123 | 84.0 | 6 | 5 | 22 | 405 | 332 | FORCE06ENRHG1 |
| FORCE07E | 204 | 170 | 148 | 84.0 | 7 | 6 | 25 | 462 | 382 | FORCE07ENRHG1 |
| FORCE08E | 238 | 199 | 173 | 84.0 | 7 | 7 | 28 | 518 | 438 | FORCE08ENRHG1 |
| FORCE09E | 272 | 227 | 197 | 84.0 | 8 | 8 | 31 | 564 | 484 | FORCE09ENRHG1 |

All dimensions and specifications are subject to change without notice.

1. Input ratings can be used for elevations up to 2,000 ft. Refer to System Start-up and Checkout section of IO&S Manual for ratings above 2,000 ft.
2. Net AHRI water ratings shown are based on a piping and pickup allowance of 1.15. The manufacturer should be consulted before selecting a boiler for installations having unusual piping and pickup requirements, such as intermittent system operation, extensive piping, etc.



- NOTES:**
1. Minimal radial distance around vent pipe and breeching for single-wall metal pipe vent connector, otherwise follow vent connector manufacturer's recommended clearances.
 2. Add height required to maintain 6" clearance from all breeching components. Vent damper may be installed in vertical or horizontal section of vent connector within reach of vent damper harness.
 3. Boiler can be installed on combustible flooring.

Gas-Fired Cast Iron Steam Boiler



Standard Features

- Natural gas (LP conversion kit available)
- Electronic ignition
- Built-in draft diverter – fits in low spaces
- Cast iron heat exchanger, meets ASME boiler code and pressure vessel code
- Metal section connectors resist chemicals, increase the life of the boiler
- Fully assembled
- 10-year limited warranty
- Fully packaged
- Insulated jacket
- Pressure limit
- 15 psi safety valve
- Honeywell gas valve
- Hydrolevel probe-type LWCO

- Steam pressure gauge
- Built-in draft diverter
- Flame roll out switch
- Blocked vent switch
- Vent damper
- Drain valve

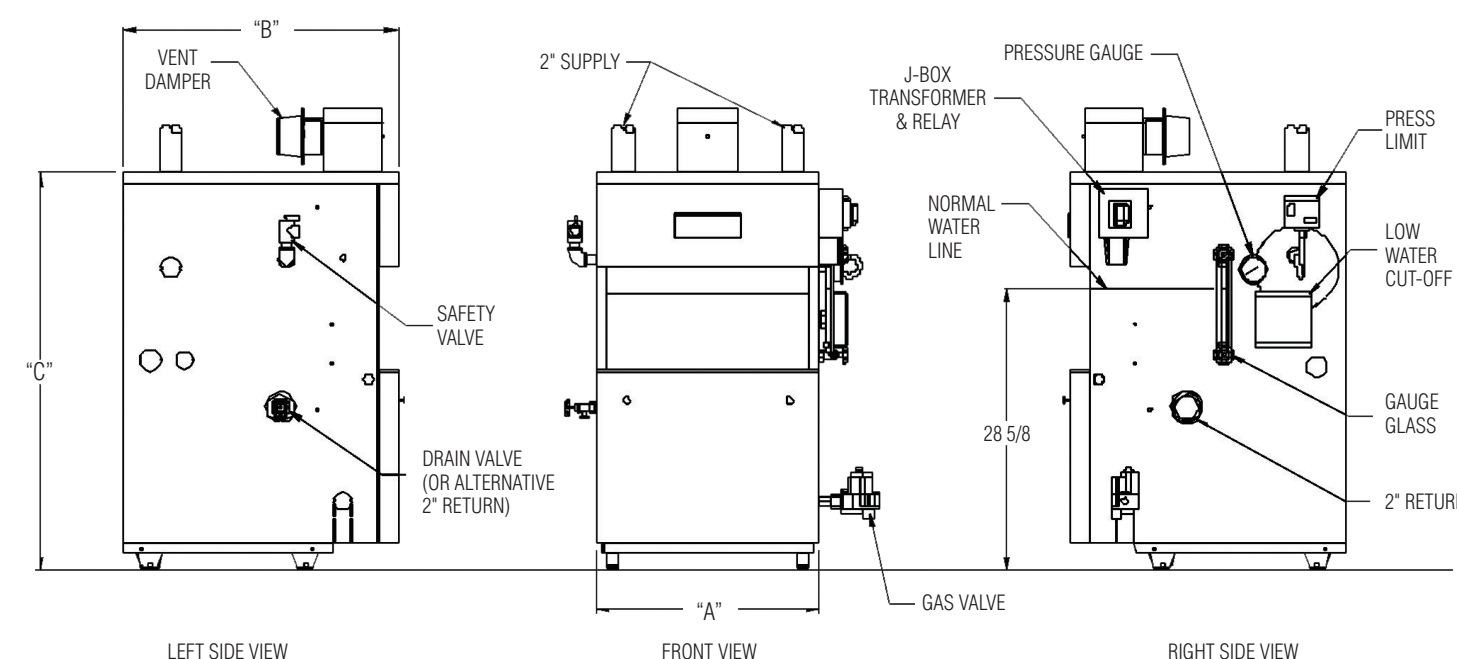
Technical Information

| Model | Dimensions (inches) | | | | AFUE% | Input Rate (MBH) | DOE Heating Capacity (MBH) | Net AHRI Steam (MBH) | Steam (Sq. Ft.) | Approx. Shipping Weight (lbs.) | Alt 1 |
|------------|---------------------|-----|---------|----------------------|-------|------------------|----------------------------|----------------------|-----------------|--------------------------------|----------------|
| | "A" | "B" | "C" | Flue Collar Diameter | | | | | | | |
| FORCESTM03 | 12-3/4 | 28" | 40-7/16 | 4 | 81.9 | 69 | 56 | 42 | 175 | 350 | FORCESTEAM03NH |
| FORCESTM04 | 16 | 28" | 40-7/16 | 5 | 82.0 | 103 | 84 | 63 | 263 | 420 | FORCESTEAM04NH |
| FORCESTM05 | 19-1/4 | 28" | 40-7/16 | 6 | 82.0 | 138 | 113 | 85 | 354 | 485 | FORCESTEAM05NH |
| FORCESTM06 | 22-1/2 | 28" | 40-7/16 | 6 | 82.1 | 172 | 142 | 107 | 446 | 555 | FORCESTEAM06NH |
| FORCESTM07 | 25-3/4 | 30" | 40-7/16 | 7 | 82.1 | 207 | 171 | 128 | 533 | 620 | FORCESTEAM07NH |
| FORCESTM08 | 29 | 30" | 40-7/16 | 7 | 82.2 | 241 | 199 | 149 | 621 | 690 | FORCESTEAM08NH |

The Net AHRI Steam Ratings shown are based on a piping and pickup allowance of 1.333. The manufacturer should be consulted before selecting a boiler for installations having unusual piping and pickup requirements, such as intermittent system operation, extensive piping systems, etc.



Ratings shown are for installations at sea level and elevations up to 2,000 feet.



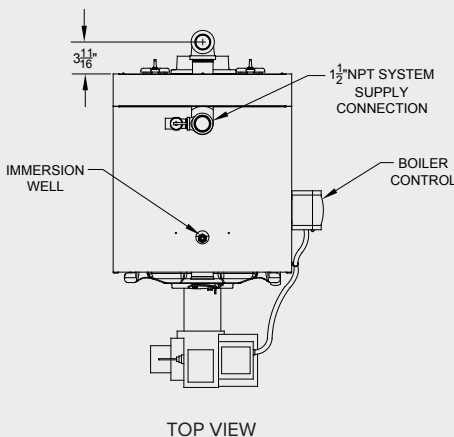


Oil-Fired Cast Iron Water Boiler

Standard Features

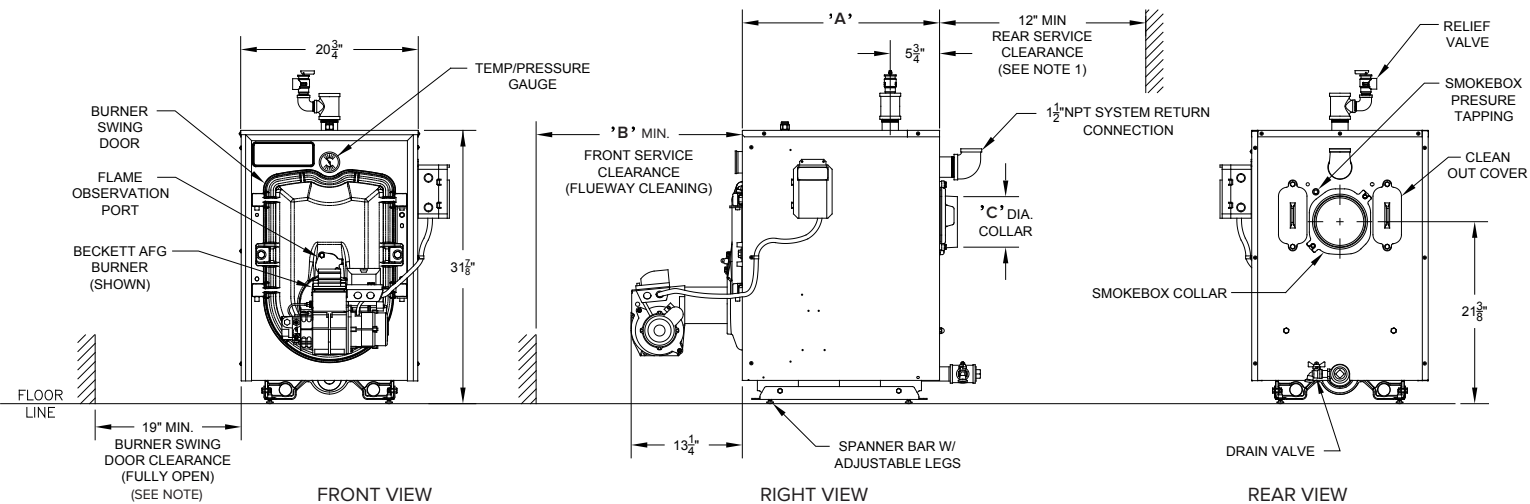
- 87% AFUE, ENERGY STAR® certified
 - 0.6 to 1.30 GPH in four sizes
 - Chimney vented, optional direct vent kit available (sizes 140, 182)
 - 3-pass cast iron heat exchanger
 - Fully-opening, reversible, cast iron swing door
 - Return water mixing tube
 - Steel section connectors
 - Lifetime limited warranty on heat exchanger
 - Fully packaged
 - 3450 RPM flame retention Beckett oil burner
 - Beckett GeniSYS primary control
- Return water mixing tube
 - Grundfos Alpha2 circulator
 - Draft regulator
 - Electronic ignitor 14KV
 - Clean cut fuel pump
 - Tridicator
 - Relief valve
 - Drain valve
 - Integrated lifting legs (for level installation)

Technical Information



| Model | Min. Chimney Requirements | | | Direct Vent System | |
|---------------|---------------------------|--------------------|---------------|--------------------|-------------------------------|
| | Round Inch Diam. | Rectangle (Inches) | Height (Feet) | Kit Part Number | Vent Connector Diameter (In.) |
| FORCEOIL084-E | 6 | 8 x 8 | 15 | N/A | N/A |
| FORCEOIL115-E | 6 | 8 x 8 | 15 | N/A | N/A |
| FORCEOIL140-E | 6 | 8 x 8 | 15 | 106401-01 | 5 |
| FORCEOIL182-E | 7 | 8 x 8 | 15 | 106401-01 | 5 |

Note:
Return fittings and drain valve shipped loose. The manufacturer should be consulted before selecting a boiler for installations having unusual piping and pickup requirements, such as intermittent system operation, extensive piping, etc.



| Model | Dimensions (Inches) | | | Burner Capacity | | | Net AHRI Ratings (MBH) | AFUE % | Water Content (Gal.) | Heating Transfer Surface Area (Sq. Ft.) | Approximate Shipping Weight (lbs.) | ALT1 |
|---------------|---------------------|----|---|-----------------|-----|----------------------------|------------------------|--------|----------------------|---|------------------------------------|-------------------|
| | A | B | C | GPH | MBH | DOE Heating Capacity (MBH) | | | | | | |
| FORCEOIL084-E | 17 | 24 | 5 | 0.60 | 84 | 74 | 64 | 87 | 7.7 | 13.29 | 475 | FORCEOIL084EGBHDR |
| FORCEOIL115-E | 17 | 24 | 5 | 0.80 | 115 | 101 | 88 | 87 | 7.7 | 13.29 | 475 | FORCEOIL115EGBHDR |
| FORCEOIL140-E | 23 | 24 | 6 | 1.00 | 140 | 123 | 107 | 87 | 11.08 | 20.29 | 567 | FORCEOIL140EGBHDR |
| FORCEOIL182-E | 29 | 30 | 6 | 1.30 | 182 | 160 | 139 | 87 | 14.46 | 27.29 | 660 | FORCEOIL182EGBHDR |

The Net AHRI Ratings shown are based on a piping and pickup allowance of 1.15.



VFO Oil-Fired Cast Iron Water Boiler

Standard Features

- ENERGY STAR® certified 87% AFUE models available
- Available with tankless water heater (DHW coil)
- Chimney vented
- Cast iron sectional heat exchanger
 - Assembled with reliable, long life, metal push nipples
- Swing-away cast iron burner door
- Grundfos® Alpha2™ high-efficiency ECM circulator
- Beckett® AFG burner and GeniSys™ primary control
- Hydrolevel® HydroStat 3250-Plus combination high limit/circulator relay control
 - Energy-saving thermal targeting software, outdoor reset available
- Fully packaged sectional oil boiler
- Limited lifetime warranty on heat exchanger, 1-year manufacturer's warranty on parts
- Tridicator temperature/pressure gauge
- ASME relief valve (30 psi)
- Drain valve
- Fuel pump
- Electronic ignitor
- Made in U.S.A.

Technical Information

| Model* | Burner Capacity | | DOE Heating Capacity (MBH) ² | Net AHRI Ratings (MBH) ³ | AFUE (%) | Dimensions (Inches) | | | Ship Weight (lbs.) | Tankless DHW* (GPM) | ALT1* | Replacement Nozzle |
|----------------|-----------------|--------------------------|---|-------------------------------------|----------|--------------------------------|--------------------------------|-------------------------------|--------------------|---------------------|--------------|--------------------|
| | Input (GPH) | Input (MBH) ¹ | | | | A | B | Flue Collar C | | | | |
| FORCEVFO-3-075 | 0.75 | 105 | 92 | 80 | 87.0 | 17 ³ / ₈ | 8 ¹ / ₄ | 5 ⁷ / ₈ | 560 | 3.00 | FORCEVF03E | — |
| FORCEVFO-3-100 | 1.00 | 140 | 122 | 106 | 86.3 | 17 ³ / ₈ | 8 ¹ / ₄ | 5 ⁷ / ₈ | 560 | 3.25 | FORCEVF03E** | 0.85 x 60B |
| FORCEVFO-4-120 | 1.25 | 168 | 148 | 129 | 87.0 | 22 ³ / ₈ | 10 ⁷ / ₈ | 6 ⁷ / ₈ | 680 | 3.75 | FORCEVF04E | — |
| FORCEVFO-4-150 | 1.50 | 210 | 182 | 158 | 86.0 | 22 ³ / ₈ | 10 ⁷ / ₈ | 6 ⁷ / ₈ | 680 | 4.00 | FORCEVF04E** | 1.25 x 60B |
| FORCEVFO-5-175 | 1.75 | 245 | 214 | 186 | 86.4 | 27 ³ / ₈ | 13 ³ / ₈ | 7 ⁷ / ₈ | 800 | 4.25 | FORCEVF05E | — |
| FORCEVFO-5-190 | 1.90 | 266 | 231 | 201 | 86.1 | 27 ³ / ₈ | 13 ³ / ₈ | 7 ⁷ / ₈ | 800 | 4.75 | FORCEVF05E** | 1.50 x 45B |

Minimum chimney requirements: 8”w x 8”d x 15’h

* Tankless coil is optional, for model numbers with tankless coil, add a “T” after “FORCEVFO” (eg: FORCEVFO5-190T);

“ALT1” column numbers for boilers featuring tankless coils, add “T” as a suffix (eg: FORCEVFO3ET)

** Requires field installation of Hago or Delevan replacement nozzle supplied with boiler

(1) MBH refers to thousands of BTU per hour

(2) Based on standard test procedure prescribed by the United States Departement of Energy at combustion conditions of 13.0% CO2

(3) Net AHRI Ratings are based on piping and pickup allowance of 1.15 for water

